

(19) World Intellectual Property Organization
International Bureau



(43) International Publication Date
31 May 2001 (31.05.2001)

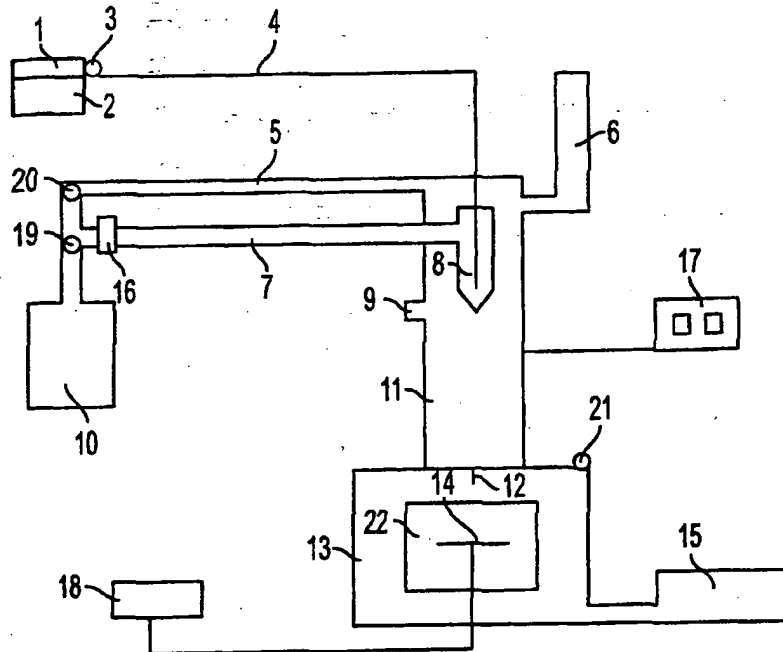
PCT

(10) International Publication Number
WO 01/38514 A2

- (51) International Patent Classification⁷: C12N 15/00
- (21) International Application Number: PCT/US00/32362
- (22) International Filing Date:
28 November 2000 (28.11.2000)
- (25) Filing Language: English
- (26) Publication Language: English
- (30) Priority Data:
09/450,226 29 November 1999 (29.11.1999) US
- (71) Applicant: MIDWEST OILSEEDS, INC. [US/US];
2501 N. Loop Drive, Ames, IA 50010 (US).
- (72) Inventors: HELD, Bruce, Marvin; 5449 Frost Drive,
Ames, IA 50014 (US). WILSON, Herbert, Martin; 1915
Stevenson Drive, Ames, IA 50010 (US). HOU, Liming;
11064 Sandistan Manor Court, St. Louis, MO 63146 (US).
LEWNAU, Carol, Jean; 904 Clark Avenue, Ames, IA
50010 (US). EBY, Janelle, Christine; 4144 Eisenhower
Lane, #2, Ames, IA 50010 (US).
- (74) Agents: JONDLE, Robert, J. et al.; Rothwell, Figg, Ernst
& Manbeck, P.C., 555 13th Street, N.W., Suite 701-E,
Washington, DC 20004 (US).
- (81) Designated States (*national*): AE, AG, AL, AM, AT, AU,
AZ, BA, BB, BG, BR, BY, BZ, CA, CH, CN, CR, CU, CZ,
DE, DK, DM, DZ, EE, ES, FI, GB, GD, GE, GH, GM, HR,
HU, ID, IL, IN, IS, JP, KE, KG, KP, KR, KZ, LC, LK, LR,
LS, LT, LU, LV, MA, MD, MG, MK, MN, MW, MX, MZ,
NO, NZ, PL, PT, RO, RU, SD, SE, SG, SI, SK, SL, TJ, TM,
TR, TT, TZ, UA, UG, UZ, VN, YU, ZA, ZW.
- (84) Designated States (*regional*): ARIPO patent (GH, GM,
KE, LS, MW, MZ, SD, SL, SZ, TZ, UG, ZW), Eurasian
patent (AM, AZ, BY, KG, KZ, MD, RU, TJ, TM), European
patent (AT, BE, CH, CY, DE, DK, ES, FI, FR, GB, GR, IE,
IT, LU, MC, NL, PT, SE, TR), OAPI patent (BF, BJ, CF,
CG, CI, CM, GA, GN, GW, ML, MR, NE, SN, TD, TG).
- Published:
— Without international search report and to be republished
upon receipt of that report.

[Continued on next page]

(54) Title: METHODS AND COMPOSITIONS FOR THE INTRODUCTION OF MOLECULES INTO CELLS



(57) Abstract: The present invention is directed to the introduction of molecules, including nucleic acids, carbohydrates, plant growth regulators and peptides into cells and tissues. The present invention is also directed to media and methods for enhancing embryogenic callus production of elite lines of soybean.



WO 01/38514 A2



For two-letter codes and other abbreviations, refer to the "Guidance Notes on Codes and Abbreviations" appearing at the beginning of each regular issue of the PCT Gazette.

**METHODS AND COMPOSITIONS FOR THE INTRODUCTION OF
MOLECULES INTO CELLS**

BACKGROUND OF THE INVENTION

5 The present invention is directed to a method for the introduction of molecules into cells, including but not limited to bacterial and plant cells. The molecules which are introduced by the method of the invention include, without limitation, nucleic acids, carbohydrates, plant growth regulators and peptides. The method of the invention is further directed to the transformation of bacteria and plant cells and tissues and to the resulting transformed cells and tissues. The present
10 invention is also directed to a method and medium for initiating more rapid and uniform growth of embryogenic callus, specifically the growth of soybean embryogenic callus.

 The publications, patents and other materials used herein to illuminate the background of the invention, and in particular cases, to provide additional details respecting the practice, are incorporated by reference, and for convenience are referenced in the following text by author and
15 date and are listed alphabetically by author in the appended bibliography.

Delivery of Molecules to Cells

 Small and large molecules can be efficiently delivered to cells without cell walls by electric pulsing (Dagher et al., 1991), electroporation (Fromm et al., 1986) or through mediation
20 by polyethylene glycol (Klebe, R.J., et al., 1983). These technologies, however, are of limited use with plants due to the presence of the plant cell wall. Other methods have been developed specifically for DNA delivery to plant cells, such as particle bombardment (Sanford et al., 1987), silicon carbide whisker technology (Kaepler et al., 1990), and electroporation (D'Halluin et al., 1992). However, each of these delivery methods has significant limitations. For example,
25 particle bombardment, while reported effective for transformation of some plant cells, typically relies on precipitation of DNA molecules onto the surface of inert carrier particles prior to delivery. As a result, this requirement limits the usefulness of the technology for delivery of molecules such as proteins. In fact, there are no reports of effective delivery of proteins to plant cells using particle bombardment.

30 Silicon carbide whisker technology is reported to be much less efficient than particle bombardment for DNA delivery to plant cells and has been shown to be effective only in one cell type and single genotype of corn (Frame et al., 1994). Delivery of DNA to cells via electroporation has been described (D'Halluin et al., 1992; Laursen et al., 1994), however, this

technology is ineffective for most cell types and there are very few reports of its successful use in plant transformation research. Furthermore, there are no known reports of its use to deliver proteins and other large molecules to the cells of higher plants.

Microinjection has been used to introduce proteins (Neuhaus et al., 1987) and DNA (Neuhaus, et al., 1987; U.S. Pat. No. 4,743,548) into plant cells. The principal limitations of microinjection are that it is extremely time-consuming and possible only with cells that can be isolated and handled as single entities. For these reasons microinjection has not been the method of choice for the transformation of any plant species where the goal is to produce genetically modified germplasm.

10 Current aerosol beam technology has been reported to be capable of transiently transforming the chloroplast genome of *Chlamydomonas*, a unicellular, green alga (Mets, U. S. Patent No. 5,240,842). *Chlamydomonas* chloroplast transformation can be considered a special situation since the chloroplast of *Chlamydomonas* is large, filling the entire cell of the typically 10 micron size organism. However, nuclear transformation was not reported by Mets and the
15 only organism reported transformed was *Chlamydomonas*. Furthermore, in the eight years since the technology was first published, aerosol beam technology has not been reported to effect nuclear transformation of any species. Sautter et al. (1991) and U.S. Pat. No. 5,877,023, describe a technology which combines aspects of the aerosol beam and particle bombardment. Transformation with the technology reported by Sautter, et al., depends upon the inclusion of
20 gold carrier particles of 1 micron diameter. There have been no other reports of the successful use of this technology.

As those of ordinary skill in the art recognize, it would be desirable to introduce a range of molecules including proteins and other macromolecules into plant and bacterial cells. This would allow, among other possibilities, the pursuit of pioneering studies in functional genomics.
25 It is clear therefore that there is a need to improve aerosol beam technology to the point where it can be used routinely to effect nuclear transformation of important crop species such as corn and soybean and also to introduce other large macromolecules into cells. The method of the present invention solves this need.

30 Methods of Tissue Culturing

Cells which undergo rapid division and are totipotent are generally regarded as highly suitable targets for introduction of DNA as a first step in the generation of transgenic plants. Undifferentiated cells in tissues, such as meristematic tissues and embryogenic tissues are

especially suitable. In general, cells of elite lines of crop plants are difficult to grow in culture. Specifically, cell division after introduction of nucleic acid is difficult to sustain and therefore selection of transformed cells often proves impossible.

Typically, embryogenic callus of soybean is cultured on high concentrations of 2,4-D
5 (Ranch et al., 1985). However, even with high concentrations of 2,4-D in the culture medium, many cultivars do not produce sufficient embryogenic callus for transformation experiments. Specifically, there are no reports of high frequency initiation of callus from immature embryos or other tissue of elite soybean lines.

The useful lifetime of a soybean variety in the marketplace is usually around three years.
10 This does not allow time for the backcrossing of transgenes into new and elite varieties from lines that are not elite, since by the time this could be accomplished, new varieties would have replaced those chosen as the recurrent parents in the backcrossing program. Furthermore, problems with loss of yield are commonly encountered when transgenes are introduced into elite material from non-elite transformants (Minor, 1998; Oplinger, 1998). Therefore, improved
15 culture media which are capable of supporting rapid and uniform growth of a range of soybean germplasm would represent a significant advance in the art. Such an improved media are described herein.

SUMMARY OF THE INVENTION

20 The present invention is directed to a method for the introduction of molecules into cells, including but not limited to bacterial and plant cells. The molecules which are introduced by the method of the invention include, without limitation, nucleic acids, carbohydrates, plant growth regulators and peptides. The method of the invention is further directed to the transformation of bacteria and plant cells and tissues and to the resulting transformed cells and tissues. The present
25 invention is also directed to a method and medium for initiating more rapid and uniform growth of embryogenic soybean callus, specifically the growth of elite lines of soybean.

BRIEF DESCRIPTION OF THE FIGURE

Figure 1 is a schematic illustration of the aerosol beam apparatus of the present invention.
30

DETAILED DESCRIPTION OF THE INVENTION

Using the method of the present invention it is possible to introduce molecules, including macro molecules, into cells without the need for precipitation of the molecules onto carrier

particles, and therefore, it is not necessary to include protocols, such as precipitation, in order to associate the molecules with carrier particles. The present invention is especially useful for introducing peptides into large numbers of cells allowing for studies in such areas as functional genomics. The present invention can also be used to accomplish nuclear transformation of cells including but not limited to bacteria, and mono- and dicotyledonous plants. More particularly, elite germplasm of crop plant species can be transformed using the present invention. The present invention is further directed to media and methods for initiating rapid and uniform growth of elite lines of soybean, for example, transformed elite germplasm.

10

DEFINITIONS

The present invention employs the following definitions:

“Aerosol droplets” refer to droplets or particles, wet or dry, dispersed in a gas.

“Callus” refers to an undifferentiated mass of cells or tissue *in vitro*.

“Carrier particles” refer to gold or tungsten or other heavy metal particles ranging in size from 0.1 micron to 4 microns which are used to introduce molecules into cells.

“Continuous Targeting” refers to the delivery of aerosol droplets in a continuous stream toward a target.

“Elite Line” refers to a genetic line used in a product, or in the immediate (within three years) development of a product.

“Embryogenic Callus” refers to tissue composed of large numbers of somatic embryos or embryo-like structures.

“Exogenous Gene”, “Exogenous DNA” and “Exogenous Nucleotide Sequence” refer to any gene, DNA or nucleic acid segment that is introduced into a recipient cell, regardless of whether a similar gene may already be present in such a cell.

“Germplasm” refers to varieties of genetic types within a species.

“Genotype” refers to the genetic identity of an organism.

“Nucleotide sequence” refers to a naturally occurring or non-naturally occurring nucleic acid, either isolated, synthesized or the result of genetic engineering techniques.

“Phytic Acid” refers to inositolhexaphosphoric acid.

“Stage” refers to the platform on which target cells may be placed in the method of the invention.

“Target Surface” refers to the cells comprising the uppermost layer of cells or tissue that is first encountered by the stream of aerosol droplets produced by the aerosol beam apparatus.

"Transformation" refers to the acquisition of new genetic coding sequences by the incorporation of an exogenous nucleotide sequence.

"Transgenic" and "Transformed" refers to organisms into which exogenous nucleotide sequences are integrated.

5 The practice of the present invention employs, unless otherwise indicated, conventional techniques of chemistry, molecular biology, microbiology, recombinant DNA, genetics, and immunology. See, e.g., Maniatis et al., 1982; Sambrook et al., 1989; Ausubel et al., 1992; Glover, 1985; Anand, 1992; Guthrie and Fink, 1991; Gelvin et al., 1990; Grierson et al., 1984.

10 Method of Delivering Molecules to Cells

The method of the present invention offers a number of advantages over current methods of DNA delivery. Aerosol beam technology of the invention employs the jet expansion of an inert gas as it passes from a region of higher gas pressure to a region of lower gas pressure through a small orifice. The expanding gas accelerates aerosol droplets containing the molecules to be introduced into a cell or tissue. The size of the droplet is of particular importance when molecules are to be introduced into small cells or cellular organelles, for example, cells less than about 20 microns. The importance of droplet size has been demonstrated with particle bombardment technology where particles of greater than 1 micron in diameter were shown to be unsuitable for introducing DNA into cells of 10 to 20 microns in diameter (Klein, et al., 1988(a); Klein, et al., 1988(b) due to the damage produced by particles of such size. On the other hand, large particles have been reported to be more likely to penetrate the cells (U.S. Pat. No. 5,877,023).

Acceleration of droplets of a DNA containing solution by jet expansion is the subject of U.S. Patent 5,240,842 to Mets which is herein incorporated by reference. The only successful transformation reported by Mets is with droplets of 2 micron diameter. Droplets of this size could be expected to destroy cells such as bacteria which are typically no larger than 2 microns. There are no examples of successful use of droplets smaller than 2 microns in diameter described in the patent to Mets. The diameter of a substantial portion of the aerosol droplets generated by the method of the invention are believed to be less than 0.1 microns at the point of impact with the target cells. This is supported by the ability to routinely and efficiently transform bacterial cells of approximately 1 to 2 microns in length using the method of the invention. Further support is found in the expectation that droplets larger than 0.1 micron in diameter are unlikely to

"Transformation" refers to the acquisition of new genetic coding sequences by the incorporation of an exogenous nucleotide sequence.

"Transgenic" and "Transformed" refers to organisms into which exogenous nucleotide sequences are integrated.

5 The practice of the present invention employs, unless otherwise indicated, conventional techniques of chemistry, molecular biology, microbiology, recombinant DNA, genetics, and immunology. See, e.g., Maniatis et al., 1982; Sambrook et al., 1989; Ausubel et al., 1992; Glover, 1985; Anand, 1992; Guthrie and Fink, 1991; Gelvin et al., 1990; Grierson et al., 1984.

10 Method of Delivering Molecules to Cells

The method of the present invention offers a number of advantages over current methods of DNA delivery. Aerosol beam technology of the invention employs the jet expansion of an inert gas as it passes from a region of higher gas pressure to a region of lower gas pressure through a small orifice. The expanding gas accelerates aerosol droplets containing the molecules
15 to be introduced into a cell or tissue. The size of the droplet is of particular importance when molecules are to be introduced into small cells or cellular organelles, for example, cells less than about 20 microns. The importance of droplet size has been demonstrated with particle bombardment technology where particles of greater than 1 micron in diameter were shown to be unsuitable for introducing DNA into cells of 10 to 20 microns in diameter (Klein, et al., 1988(a);
20 Klein, et al., 1988(b) due to the damage produced by particles of such size. On the other hand, large particles have been reported to be more likely to penetrate the cells (U.S. Pat. No. 5,877,023).

Acceleration of droplets of a DNA containing solution by jet expansion is the subject of U.S. Patent 5,240,842 to Mets which is herein incorporated by reference. The only successful
25 transformation reported by Mets is with droplets of 2 micron diameter. Droplets of this size could be expected to destroy cells such as bacteria which are typically no larger than 2 microns. There are no examples of successful use of droplets smaller than 2 microns in diameter described in the patent to Mets. The diameter of a substantial portion of the aerosol droplets generated by the method of the invention are believed to be less than 0.1 microns at the point of impact with
30 the target cells. This is supported by the ability to routinely and efficiently transform bacterial cells of approximately 1 to 2 microns in length using the method of the invention. Further support is found in the expectation that droplets larger than 0.1 micron in diameter are unlikely to

be able to enter a rod-shaped or rectangular cell of 1 to 2 microns in length without destroying the cell.

Particle bombardment, as practiced using the Dupont PDS-1000, differs from aerosol beam technology in part because it relies on acceleration provided by a single burst of helium gas pressure. Viewed under a scanning electron microscope, the particles from the Dupont gun range in size from 0.1 microns up to 4 microns in diameter (using M5 tungsten particles with an average diameter of 0.4 microns).

DNA has been introduced into bacterial cells using polyethylene glycol (Klebe et al., 1983), electroporation (Bonmassie et al., 1990), treatment with divalent cations (Hanahan, 1983), and particle bombardment (Smith et al., 1992). Smith et al. (1992), consider convenience to be one of the main advantages of biolistic transformation over electroporation. Nevertheless, to achieve efficient transformation using the biolistic process, treatment of bacterial cells with an osmoticum is required as is careful control of the relative humidity at which the particles were stored prior to bombardment. Bacterial transformation using the method of the present invention is much more efficient than biolistic-mediated transformation and requires no special pretreatments.

Based on successful and efficient transformation of bacteria using the method of the present invention (Example 12), it is believed that a substantial number of the aerosol droplets produced are less than 0.1 micron in diameter at the point of impact with the target cells. DNA carried in aerosol droplets of this small size penetrates cells only because of the speeds attained by the aerosol droplets. Speeds achieved by the aerosol beam method of the invention are supersonic and can reach 2000 meters/second. By contrast, top speed achieved by the particle gun is 200 meters/second.

In part, because aerosol droplets generated by the present invention are so much smaller than the particles produced by the prior art, the present invention is superior in delivering molecules to small cells, for example cells less than 20 microns in diameter. Many animal, plant and microbial cells are in this size range. Entry of micron-size particles into cells of this size can be expected to cause significant damage. The very small aerosol droplets produced by the method of the present invention are also advantageous for chloroplast transformation, particularly in monocots and graminaceous embryogenic cell cultures contain proplastids (the target for chloroplast transformation) that are typically less than 1 micron in diameter (Bilang and Potrykus, 1998).

THIS PAGE BLANK (USPTO)

Another advantage of the present invention is that it permits better quantification of DNA delivery to cells than is possible with particle gun technology. This is because no precipitation or coating of DNA onto carrier particles is required with the method of the invention, procedures which introduce variability into the DNA delivery process.

5 As a further embodiment of the present invention, molecules other than DNA can be readily introduced into cells, either alone or in combination with DNA. Inclusion of molecules other than DNA introduced at the same time as DNA could improve integration and increase the number of selectable transformants. By contrast, effective delivery of molecules can be achieved with particle bombardment only after first coating the particles with the substance to be
10 delivered. In those cases where it is not possible or desirable to use coated particles, the aerosol beam may be the most effective way to deliver chemicals directly to the interior of cells on a large scale.

An additional advantage of the present invention is that DNA is delivered as a stream of aerosol droplets emerging through a small orifice (continuous targeting). This targeting can
15 continue for as long as the target tissue can survive being held in a vacuum. In the course of delivery the droplet stream can then be precisely targeted. This further distinguishes aerosol beam technology from particle bombardment as currently practiced where all DNA-coated particles are delivered to cells in a single blast resulting in a shot pattern covering an area of several centimeters in diameter. A hybrid of the aerosol beam and particle bombardment
20 methods (Sautter, et al.; U.S. Patent No. 5,877,023) is reported to deliver a solution of DNA and 1 micron diameter gold carrier particles in interrupted blasts, thus continuous targeting of tissue is not possible with this method. Continuous targeting also allows for the identification of an area of tissue (such as the apex of a shoot meristem) and its positioning under the beam to ensure focused delivery of aerosol droplets to the tissue. Furthermore, repeated blasts which are
25 delivered with particle bombardment and the method of Sautter, et al., can be expected to result in severe and extensive tissue destruction. The ability to continuously target cells or tissues makes the aerosol beam clearly superior to other direct DNA delivery methods including particle bombardment.

The aerosol beam of the present invention differs from U.S. Patent No. 5,240,842 in
30 numerous respects. First, Mets does not include any positive pressure entrainment airflow to guide or focus the aerosol beam. Second, Mets includes a vent in the compressed gas path to allow release of excess aerosol. This results in wasted compressed gas and aerosol material. The vent is required in Mets because of the high flow rates used. Third, the nebulizer used by Mets is

a type used in inhalation therapy and is described as of the Lovelace design. This nebulizer is a single use disposable unit that generates aerosol droplets with median mass diameters in the range of 2 microns. Fourth, droplets of the size described by Mets would be too large to deliver DNA or any other molecule to most bacteria or plant cells and yet allow survival of these cells.

5

Transformation of Plant Cells and Tissues

Introduction of DNA and other molecules such as proteins into plant cells by the method of the present invention is exemplified by transformation of corn (monocotyledonous plants) and soybean (dicotyledonous plants). Briefly, the transgenic plants of this invention may be produced by (I) culturing a source of cells, (II) optionally, pretreating cells to yield tissue with increased capacity for uptake and integration by aerosol beam technology, (III) transforming said tissue with an exogenous nucleotide sequence by the aerosol beam method of the invention, (IV) optionally, identifying or selecting for transformed tissue, (V) regenerating transgenic plants from the transformed cells or tissue, and (VI) optionally, producing progeny of said transgenic plants.

15

Method of Culturing Cells

Corn cell cultures.

The corn cells which may be used as starting materials in the present transformation process include elite inbred lines of corn. For example, embryogenic callus and immature embryos of Stine Inbred 963 were used for both transient expression experiments and the production of stably transformed callus, embryos and plants. Other cells may be used, including those derived from meristems. These meristems are found, for example, in juvenile leaves, immature tassels, immature and mature embryos and coleoptilar nodes. While the method of the present invention can be applied to any corn cells from which fertile plants can be recovered, cell cultures derived from immature embryos or embryogenic callus have been utilized herein for purposes of example.

20

25

Methods of preparing and maintaining corn cells are well known in the art (Duncan et al., 1985). Typically, cultures are prepared from immature maize embryos which have been removed from the kernels of an ear when the embryos are about 1-2 mm. in length. The scutellum of immature embryos can be stimulated to give rise to embryogenic callus from which plants can be regenerated. Embryogenic callus can also be obtained from the developing reproductive organs

30

of a corn plant. Exemplary methods for isolating immature embryos from corn are described by Green and Phillips (1976).

In a preferred embodiment of the invention, the embryos were placed on culture medium, for example, DN62AG (Table 1), under aseptic conditions. This culture medium, DN62AG, has
5 been described in U. S. Serial No. 09/203,679, filed December, 1998, incorporated herein by reference. It has been discovered that immature embryos incubated for approximately 2 to 3 days on DN62AG medium, after dissection and prior to beaming, show improved survival. This, in turn, improves the efficiency with which transformants can be recovered. The embryogenic callus cultures are routinely maintained on stock culture medium, preferably on DN62 (Table 1)
10 for ten-day periods between transfers.

Soybean cell cultures.

Soybean cells which can be used as starting materials in the method of the invention include cell cultures and explants containing meristematic tissue from which plants can be regenerated. Exemplary of cells which are appropriate are embryogenic callus of Stine 13404-
15 TT (Examples 10).

Conventional methods of preparing and maintaining embryogenic soybean cultures are described by Ranch et al. (1985). In one embodiment of the invention, the medium of Ranch et al (1985), can be modified by the inclusion of one or more of four constituents (Example 8). Immature cotyledons about 1 mm in length were used as the initial explants and were placed on
20 culture media under sterile conditions.

In another embodiment of the present invention, a novel culture media may be used to stimulate high frequency production of embryogenic soybean callus. Improvement varied with the genotype being cultured. The length of time required for a culture passage was unexpectedly reduced to two weeks with the use of this novel medium as compared to four weeks typical with
25 other media. The inclusion of one or more of four media constituents, coconut water, myoinositol, phytic acid and inorganic phosphate concentration, enhanced embryogenic callus production and allowed significant improvements to be made to transgenic clone production in terms of number of clones recovered, embryo morphology, and reduction in the time needed to identify the clones and regenerate plants from them. The medium of Ranch et al., 1985 (referred
30 to herein as B1-30) was used as the basal medium. An example of the medium of the present invention is B1-30 3Co5My0.25PA0.5K (footnote, Table 5). Although this medium is a preferred embodiment of growth medium, other conventional media may be utilized in the practice of the invention.

Pretreatment of cells

In another embodiment of the present invention, pretreatment of the cells may be carried out in order to increase nucleic acid delivery using the method of the invention. For example, 5 corn cells can be osmotically stressed to improve DNA delivery while preserving cell viability. Possible methods of osmotic stress include those conventional methods known in the art, for example, Russell et al., 1992. As a preferred embodiment of the invention, a novel medium designed to provide osmotic stress referred to as DN62OSM was used (Example 2, Table 1). The duration of exposure to osmotic stress may range from about 45 minutes up to about 24 10 hours on this medium, with a preferred duration of about 45 minutes to about one hour. In the case of soybean cells an osmotic pretreatment was not employed.

Introduction of DNA into Cells

One embodiment of the present invention is directed to the introduction of a nucleotide 15 sequence into plant cells via aerosol beam technology. Once a desired nucleotide sequence has been synthesized or cloned, and engineered, it is necessary to integrate it into the genome of a plant of interest so that it is stably inherited by progeny of the transformed plant. Following introduction of foreign sequence into target cells and subsequent cell division, selection is applied to identify those cells in which integration and expression of the sequence is occurring. 20 Stable transformation involves the integration of functional genetic sequences into the genome so that the integrated sequences are passed on to and are present in the transformed plants. Any procedure which could enable the stable integration of nucleic acids would greatly improve transformation protocols. In contrast, transient transformation results in eventual loss of the sequence and, therefore, transient methods are of little use in generating transgenic plants, 25 although they may be of use in the optimization of conditions for stable transformation and in evaluation of gene expression.

An embodiment of the aerosol beam apparatus of the present invention is shown in Figure 1. The apparatus includes a pressurized gas supply 10, a vacuum chamber 13, and an entrainment housing 11.

30 The pressurized gas supply 10 may contain a pressurized propellant gas such as, for example, helium. The pressurized gas supply 10 is connected to a nebulizer conduit 7 and is also connected to an entrainment tube 5.

The entrainment housing 11 has an interior, and located within the interior is a nebulizer 8. The entrainment housing 11 interior communicates with the pressurized gas supply 10 via the entrainment tube 5, which may include a pressure regulator 20. The nebulizer 8 communicates with the pressurized gas supply 10 via the nebulizer conduit 7, which may include a filter 16 and a pressure regulator 19. A single regulator may be employed if the entrainment gas pressure can be the same as the nebulizer gas pressure. The entrainment housing 11 may also include a temperature controller 17 which controls the temperature in the entrainment housing 11 to a range of about 32 degrees to about 80 degrees Centigrade. A pressure gauge 6 is connected to the entrainment housing 11 and may be used to control the pressure regulator 20 to set the entrainment air pressure and flow. The entrainment housing 11 may include a nucleospot 9. The nucleospot 9 may be used to reduce electrostatic charges created by the moving gas.

The nebulizer 8 is an aerosol nebulizer that is fed both an sample material and a pressurized gas. The sample material may be fed to the nebulizer 8 by a pump or other suitable means. In the nebulizer 8, the pressurized gas forces the sample material through a small orifice in the nebulizer, where the pressurized gas converts the sample material into aerosol droplets. The aerosol droplets are then carried by the resulting beam of gas to the nozzle, through which the aerosol droplets greatly accelerated.

An sample material supply conduit 4 is connected to the nebulizer 8. The sample material supply conduit 4 may be further connected to a pump 2 and filter 3. In a preferred embodiment, the pump 2 is a syringe pump and includes a plastic syringe 1 holding a quantity of an sample material.

In addition to the aerosol beam, pressurized air flows into the entrainment housing 11 through the entrainment tube 5. This entrainment gas flow also has a velocity and moves substantially parallel to the aerosol spray, and serves to entrain the aerosol spray and focus it on the way to the target.

The vacuum chamber 13 includes a nozzle 12, a vacuum pump 15, and a door 22. The vacuum chamber 13 may additionally include a stage 14, a vacuum gauge 21, and a stage switch 18. The nozzle 12 further guides the aerosol beam as it approaches the stage 14 (on which the target to be injected rests). The nozzle 12 includes an orifice, with the orifice size ranging from about 200 microns to about 500 microns. The orifice size is preferably 300-330 microns. The combination of the pressurized gas in the entrainment housing 11 and the partial vacuum in the vacuum chamber 13 accelerates the aerosol droplets that impact the target cells.

The stage 14 may be a movable stage wherein the target may be moved relative to the incoming aerosol spray so that a controlled area may be impacted with the sample material. The stage switch 18 may be used to control movement of the stage 14. The vacuum gauge 21 may be used to monitor and control the vacuum level in the vacuum chamber 13.

5 The aerosol can be produced by various micro-flow nebulizers known in the art, such as the HEN from J.E. Meinhard Associates, Inc., or the MCN100 style M-4 nebulizer from Cetac Technologies, Inc., although other micro-flow nebulizers may also be used. The preferred nebulizer described in U.S. Pat. No. 5,240,842 was one typically used in inhalation therapy and was described as being of the Lovelace design which is a single-use disposable unit that
10 generates aerosol droplets with median mass diameters in the range of 2 microns.

The nebulizing gas can be selected from those inert gases known in the art, preferably high purity compressed helium. The gas is regulated and filtered. The entrainment gas can be high purity compressed helium, filtered or not. The entrainment tube or housing may contain a nucleospot to reduce electrostatic charges and can be maintained at a temperature of between
15 about 32 and 80°C by miniature microprocessor temperature controllers. The sample flow rate may be set at from about 1 to 1200 $\mu\text{l}/\text{min}$.

The method of the present invention differs from the several embodiments described in Mets (U.S. Pat. No. 5,240,842) wherein a common feature was the presence of a vent to allow release of excess aerosol which was the result of the high flow rates that were used. It has been
20 unexpectedly discovered that high efficiency nebulizers, such as the HEN and MCN 100, provide adequate aerosol droplet production when using very low (1 to 1200 $\mu\text{l}/\text{min}$) flow rates. Venting of excess aerosol is therefore not necessary with the method of the invention. Furthermore, the aerosol droplets produced by the micro-flow nebulizers in the method of the invention are much smaller at the point of impact with the target than the 2 micron diameters preferred by Mets.
25 Small droplet size can be maintained in the method of the invention by the use of helium as the nebulizing gas although other means known in the art may be used.

Improved efficiency of transformation is possible using the method of the invention which employs the routine production of small aerosol droplets traveling at supersonic speed. The correlation between the reduced droplet size and improved efficiency was unexpected. It
30 was previously reported in U.S. Pat. No. 5,877,023, in regard to particle size, that large particles are more able to penetrate the cells though use of small particles is more favorable for the survival of cells (Col. 7, L. 14-18). The method of the invention also improved existing

technology by enabling the transformation of bacteria which has rarely, if ever, been accomplished, previously.

The chamber vacuum can be maintained at from about 26 to about 30 in. Hg throughout a given run with use of a vacuum pump. Water may be placed in the vacuum chamber to prevent
5 loss of moisture from the target tissue. A syringe needle cut off just proximal to the plastic holder can be used for the nozzle. Nozzle diameters of from about 200 to about 500 microns can be used. The target tissue can be placed in the center of an agar plate below the nozzle tip. The stage movement can be adjusted to achieve the desired result.

Briefly, treatment of target tissue with the aerosol beam apparatus may be performed as
10 follows: (1) place tissue on target surface, on the stage; (2) start the vacuum pump; (3) set the nebulizing gas pressure; (4) set the entrainment gas pressure; (5) start the syringe pump; (6) start the movement of the stage and let it run while the aerosol particles suspended in the inert gas impact the target tissue. Delivery can continue for as long as the target tissue can survive being held in a vacuum.

In order to successfully produce stably transformed plants by aerosol beam technology,
15 four requirements must be met: (1) the target cells must remain viable; (2) the target cells must be able to take up the recombinant nucleic acid at high enough frequencies to insure the stable transformation of a useful number of cells; (3) once transformed, the recipient cells must be able to maintain cell division and regenerative capacity throughout the selection process in order to
20 confirm and identify stably transformed cells; and (4) the transformed regenerated plants must be able to express the recombinant nucleic acid.

Utilizing the method of the present invention, accurate and extensive tissue targeting can be achieved with any explant, including immature embryo, immature tassel, section of leaf or root, anther, pollen and meristem cells of corn, and meristem and somatic embryo cells of
25 soybean. For example, in the case of corn, pollen, as well as its precursor cells, microspores, may be capable of functioning as recipient cells for nucleic acid delivery, or as vectors to carry foreign DNA for incorporation during fertilization. The continuous targeting which is possible with the method of the invention enables flexibility and accuracy in delivering nucleic acid to target cells. Individual immature corn embryos can be targeted so that only particular regions of
30 the scutellum are subjected to the aerosol beam or, alternatively, it is possible to deliver DNA to the entire surface area of the scutellum with the aerosol beam.

Examples of genes useful for expression in transformed plant cells are known in the art. More particularly, plants can be genetically engineered to express various phenotypes of agronomic interest. Such genes include, but are not limited to, those described herein.

Genes That Confer Resistance or Tolerance to Pests or Disease

5 (A) Plant disease resistance genes. Plant defenses are often activated by specific interaction between the product of a disease resistance (R) gene in the plant and the product of a corresponding avirulence (Avr) gene in the pathogen. A plant variety can be transformed with cloned resistance gene to engineer plants that are resistant to specific pathogen strains. Examples of such genes include, the tomato Cf-9 gene for resistance to *Cladosporium fulvum* (Jones et al. 10 (1994)), the tomato Pto gene, which encodes a protein kinase, for resistance to *Pseudomonas syringae* pv. tomato (Martin et al. (1993)), and the *Arabidopsis* RSSP2 gene for resistance to *Pseudomonas syringae* (Mindrinos et al. (1994)).

(B) A *Bacillus thuringiensis* protein, a derivative thereof or a synthetic polypeptide modeled thereon, such as, a nucleotide sequence of a Bt δ -endotoxin gene (Geiser et al. (1986)). 15 Moreover, DNA molecules encoding δ -endotoxin genes can be purchased from American Type Culture Collection (Rockville, MD), under ATCC accession numbers. 40098, 67136, 31995 and 31998.

(C) A lectin, such as nucleotide sequences of several *Clivia miniata* mannose-binding lectin genes (Van Damme et al. (1994)).

20 (D) A vitamin binding protein, such as avidin and avidin homologs which are useful as larvicides against insect pests. See U.S. Patent No. 5,659,026.

(E) An enzyme inhibitor, e.g., a protease inhibitor or an amylase inhibitor. Examples of such genes include a rice cysteine proteinase inhibitor (Abe et al. (1987)), a tobacco proteinase inhibitor I (Huub et al. (1993)), and an α -amylase inhibitor (Sumitani et al. (1993)).

25 (F) An insect-specific peptide or neuropeptide which, upon expression, disrupts the physiology of the affected pest. Examples of such genes include, an insect diuretic hormone receptor (Regan (1994)), an allostatin identified in *Diploptera puntata* (Pratt (1989)), insect-specific, paralytic neurotoxins (U.S. Patent No. 5,266,361).

(G) An insect-specific venom produced in nature by a snake, a wasp, etc., such as, a 30 scorpion insectotoxic peptide (Pang (1992)).

(H) An enzyme responsible for a hyperaccumulation of a monoterpene, a sesquiterpene, a steroid, hydroxamic acid, a phenylpropanoid derivative or another non-protein molecule with insecticidal activity.

(I) An enzyme involved in the modification, including the post-translational modification, of a biologically active molecule; for example, glycolytic enzyme, a proteolytic enzyme, a lipolytic enzyme, a nuclease, a cyclase, a transaminase, an esterase, a hydrolase, a phosphatase, a kinase, a phosphorylase, a polymerase, an elastase, a chitinase and a glucanase, whether natural
5 or synthetic. Examples of such genes include, a callas gene (PCT published application WO93/02197), chitinase-encoding sequences (which can be obtained, for example, from the ATCC under accession numbers 3999637 and 67152), tobacco hookworm chitinase (Kramer et al. (1993)) and parsley ubi4-2 polyubiquitin gene (Kawalleck et al. (1993)).

(J) A molecule that stimulates signal transduction. Examples of such molecules include,
10 nucleotide sequences for mung bean calmodulin cDNA clones (Botella et al. (1994)), a nucleotide sequence of a maize calmodulin cDNA clone (Griess et al. (1994)).

(K) A hydrophobic moment peptide. See U.S. patent Nos. 5,659,026 and 5,607,914, the latter teaches synthetic antimicrobial peptides that confer disease resistance.

(L) A membrane permease, a channel former or a channel blocker, such as, a cecropin- β
15 lytic peptide analog (Jaynes et al. (1993)) which renders transgenic tobacco plants resistant to *Pseudomonas solanacearum*.

(M) A viral protein or a complex polypeptide derived therefrom. For example, the accumulation of viral coat proteins in transformed plant cells imparts resistance to viral infection and/or disease development effected by the virus from which the coat protein gene is derived, as
20 well as by related viruses. Coat protein-mediated resistance has been conferred upon transformed plants against alfalfa mosaic virus, cucumber mosaic virus, tobacco streak virus, potato virus X, potato virus Y, tobacco etch virus, tobacco rattle virus and tobacco mosaic virus. See, for example, Beachy et al. (1990).

(N) An insect-specific antibody or an immunotoxin derived therefrom. Thus, an antibody
25 targeted to a critical metabolic function in the insect gut would inactivate an affected enzyme, killing the insect. For example, Taylor et al. (1994) shows enzymatic inactivation in transgenic tobacco via production of single-chain antibody fragments.

(O) A virus-specific antibody. See, for example, Tavladoraki et al. (1993), which shows that transgenic plants expressing recombinant antibody genes are protected from virus attack.

30 (P) A developmental-arrestive protein produced in nature by a pathogen or a parasite. Thus, fungal endo α -1,4-D polygalacturonases facilitate fungal colonization and plant nutrient release by solubilizing plant cell wall homo- α -1,4-D-galacturonase (Lamb et al. (1992)). The

cloning and characterization of a gene which encodes a bean endopolygalacturonase-inhibiting protein is described by Toubart et al. (1992).

(Q) A developmental-arrestive protein produced in nature by a plant, such as the barley ribosome-inactivating gene, have increased resistance to fungal disease (Longemann et al.

5 (1992)).

Genes That Confer Resistance or Tolerance to a Herbicide

(A) A herbicide that inhibits the growing point or meristem, such as an imidazalinone or a sulfonylurea. Exemplary genes in this category code for mutant ALS (Lee et al. (1988)) and AHAS enzyme (Miki et al. (1990)).

10 (B) Glyphosate (resistance imparted by mutant EPSP synthase and aroA genes) and other phosphono compounds such as glufosinate (PAT and bar genes), and pyridinoxy or phenoxy propionic acids and cyclohexones (ACCase inhibitor encoding genes). See, for example, U.S. Patent 4,940,835, which discloses the nucleotide sequence of a form of EPSP synthase which can confer glyphosate resistance. A DNA molecule encoding a mutant aroA gene can be obtained
15 under ATCC accession number 39256, and the nucleotide sequence of the mutant gene is disclosed in U.S. Patent 4,769,061. European patent application No. 0 333 033 and U.S. Patent 4,975,374 disclose nucleotide sequences of glutamine synthase genes which confer resistance to herbicides such as L-phosphinothricin. The nucleotide sequence of a phosphinothricin acetyltransferase gene is provided in European application No. 0 242 246. De Greef et al. (1989)
20 describes the production of transgenic plants that express chimeric bar genes coding for phosphinothricin acetyltransferase activity. Exemplary of genes conferring resistance to phenoxy propionic acids and cyclohexones, such as sethoxydim and haloxyfop, are the Acc1-S1, Acc1-S2 and Acc1-S3 genes described by Marshall et al. (1992).

Genes that Confer Resistance or Tolerance to Environmental Stresses

25 (A) Cold, freezing or frost. This includes genes that code for proteins that protect from freezing and for enzymes that synthesize cryoprotective solutes. Examples of such genes are *Arabidopsis* *COR15a* (Artus et al. (1996)) and spinach *CAP160* (Kaye et al. (1998)). Also in this category are regulatory genes that control the activity of other cold tolerance genes (Tomashow and Stockinger (1998)).

30 (B) Drought or water stress. Kasuga et al. (1999) report how stress inducible expression of *DREB1A* in transgenic plants increases their tolerance of drought stress. Pilin-Smiths et al. (1998) report that expression of bacterial genes for synthesis of trehalose produces tolerance of water stress in transgenic tobacco.

THIS PAGE BLANK (USPTO)

(C) Salinity or salt stress. Genes that code for proteins that minimize uptake of sodium in the presence of high salt, or cause the plant to sequester sodium in vacuoles, can enable plants to tolerate higher levels of salt in the soil. The wheat *HKT1* potassium transporter, described by Rubio et al. (1999), is an Example of the former. Apse et al. (1999) describe how an *Arabidopsis* 5 Na^+/H^+ antiporter can act in the latter manner.

(D) Metals. Protection from the toxic effects of metals such as aluminum and cadmium can be accomplished by transgenic expression of genes that prevent uptake of the metal, or that code for chelating agents that bind the metal ions to prevent them from having a toxic effect. Examples of such genes are *Arabidopsis ALR104* and *ALR108* (Larsen et al. (1998)) and genes 10 for the enzymes involved in phytochelatin synthesis (Schafer et al. (1998)).

Genes That Confer or Contribute to a Value-Added Trait

(A) Modified fatty acid metabolism, for example, by transforming maize or *Brassica* with an antisense gene or stearoyl-ACP desaturase to increase stearic acid content of the plant (Knultzon et al. (1992)).

15 (B) Decreased phytate content

(1) Introduction of a phytase-encoding gene would enhance breakdown of phytate, adding more free phosphate to the transformed plant, such as the *Aspergillus niger* phytase gene (Van Hartingsveldt et al. (1993)).

(2) A gene could be introduced that reduces phytate content. In maize, for 20 example, this could be accomplished by cloning and then reintroducing DNA associated with the single allele which is responsible for maize mutants characterized by low levels of phytic acid (Raboy et al. (1990)).

(C) Modified carbohydrate composition effected, for example, by transforming plants with a gene coding for an enzyme that alters the branching pattern of starch. Examples of such 25 enzymes include, *Streptococcus mucus* fructosyltransferase gene (Shiroza et al. (1988)), *Bacillus subtilis* levansucrase gene (Steinmetz et al. (1985)), *Bacillus licheniformis* α -amylase (Pen et al. (1992)), tomato invertase genes (Elliot et al. (1993)), barley amylase gene (Søgaard et al. (1993)), and maize endosperm starch branching enzyme II (Fisher et al. (1993)).

(D) Modified lignin content. The amount or composition of lignin can be altered by 30 increasing or decreasing expression of the biosynthetic enzymes for phenylpropanoid lignin precursors, such as cinnamyl alcohol dehydrogenase (CAD), 4-coumarate:CoA ligase (4CL), and O-methyl transferase (OMT). These and other genes involved in formation of lignin are described in Bloksberg et al. (1998).

As those of ordinary skill in the art will recognize, this is only a partial list of possible genes that can be used with the transformation method of the present invention. Synthesis of genes suitably employed in the present invention can be effected by means of mutually priming long oligonucleotides. See, for example, Ausubel et al. (1990) and Wosnick et al. (1987).

5 Moreover, current techniques which employ the polymerase chain reaction permit the synthesis of genes as large as 6 kilobases in length or longer. See Adang et al. (1993) and Bambot et al. (1993). In addition, genes can readily be synthesized by conventional automated techniques.

As those of ordinary skill in the art will also recognize, regulatory sequences including promoters, terminators and the like will also be required, and these are generally known in the art
10 (Zhao et al. (1998)). Plant expression cassettes preferably comprise a structural gene to which is attached regulatory DNA regions that permit expression of the gene in plant cells. The regulatory regions consist at a minimum of a promoter capable of directing expression of a gene in a plant cell. The promoter is positioned upstream or at the 5' end of the gene to be expressed. A terminator is also provided as a regulatory region in the plant expression cassette and is
15 capable of providing polyadenylation and transcription terminator functions in plant cells. The terminator is attached downstream or at the 3' end of the gene to be expressed. Marker genes, included in the vector, are useful for assessing transformation frequencies in this invention.

The DNA to be delivered to cells may contain selectable marker sequences under control of appropriate recognizable promoters for use in selecting transformed cells. Numerous
20 selectable marker genes are available for use in plant transformation including, but not limited to, neomycin phosphotransferase II, hygromycin phosphotransferase, EPSP synthase and dihydropteroate synthase. See, Miki et al. (1993). Other markers and promoters are well known in the art. The vectors may also contain selectable marker sequences under control of appropriate recognizable promoters for use in selecting transformed cells. Suitable markers and promoters
25 are well known in the art.

The recombinant nucleic acid used for transformation herein may be circular or linear, double-stranded or single-stranded. Generally, the nucleic acid is in the form of a recombinant plasmid and contains coding regions of beneficial heterologous nucleic acid with flanking regulatory sequences which promote the expression of the nucleic acid in the genome of the
30 transformed plant. For example, the recombinant nucleic acid may itself comprise or consist of a promoter that is active in other genotypes, or may utilize a promoter already present in the genotype that is the transformation target.

The compositions of, and methods for, constructing a nucleic acid sequence which can transform certain plants are well known to those skilled in the art, and the same compositions and methods of construction may be utilized to produce the recombinant nucleic acid useful herein (J. Sambrook et al., *Molecular Cloning: A Laboratory Manual*, Cold Spring Harbor Laboratory Press (2d), 1989). The specific composition of the nucleotide sequence is not central to the present invention and the invention is not dependent upon the composition of the specific transforming nucleotide sequence which is used.

Restriction enzymes can be introduced, using the method of the invention, along with linear DNA having compatible cohesive ends to increase the frequency of transformants. The introduction of restriction enzymes and DNA via electroporation has been reported for yeast and *Dictyostelium* (Schiestl and Petes, 1991; Kuspa and Loomis, 1992). However similar results have not previously been reported with plant transformation.

Selection of transformed cells

After beaming, the tissue may be retained on the osmoticum or shortly thereafter transferred to a recovery medium. Following recovery, it is desirable to identify and select those cells which contain the exogenous nucleic acid. There are two general approaches which have been found useful for accomplishing this. First, the transformed cells can be screened for the presence of the recombinant nucleic acid by various standard methods which could include assays for the expression of reporter genes, use of probes for or amplification of the desired nucleotide sequence and assessment of phenotypic effects of the recombinant nucleic acid, if any. Alternatively and preferably, when a selectable marker or reporter gene has been transmitted along with or is part of the recombinant nucleic acid, those cells which have been transformed can be identified by detecting expression of the selectable marker or reporter genes. For example, transient expression may be evaluated by use of the GUS expression cassette containing the GUS gene, which encodes an enzyme for which various chromogenic substrates are known. Stable transformation may be evaluated by use of the bar expression cassette. Various other selection schemes for identification of stably transformed tissue may be used, including selection on bialaphos or use of the GFP gene in combination with the *Streptomyces* bar gene, allowing for visual selection of fluorescing transformed tissues.

Regeneration of transformed cells

Conventional regeneration methods, well known in the art, may be used for corn species. (Duncan et al., 1985; U.S. Patent Nos. 5,484,956; 5,489,520; 5,177,010; 5,641,664; and 5,350,689, all incorporated herein by reference.)

5 Soybean regeneration may be achieved either by the methods of Ranch et al., 1985, or preferably by the methods disclosed herein (Example 9).

EXAMPLES

The present invention is further detailed in the following Examples, which are offered by
10 way of illustration and are not intended to limit the invention in any manner. Standard techniques well known in the art or the technique specifically described below are utilized.

Example 1Delivery of molecules into cells and tissuesby the method of the invention

15 Aerosol droplets containing nucleic acids and/or proteins were introduced into target tissue such as cells using the aerosol beam apparatus of the invention (Figure 1). The aerosol was produced by a micro-flow nebulizer such as the HEN from J. E. Meinhard Associates Inc., or the MCN100 style M4 nebulizer from Cetac Technologies Inc. (Liu and Montaser, 1994; Tan, et al., 1992). The nebulizing gas was high purity compressed-helium which was regulated with
20 an ACCU-TROL gas regulator - 876X model RS-7-4 and filtered through an Arrow F300-02 IT filter. When HEN and the MCN100 nebulizers were used, the nebulizing pressure was preferably 20 - 30 psi but worked within the range from about 10 psi to about 40 psi. The entrainment gas filled the entrainment tube and entrained the aerosol droplets in a straight line. Unfiltered, high purity compressed helium was used as the entrainment gas and was regulated by
25 an Arrow R262 regulator to produce slight positive pressure as measured by a Gilmont model 65 mm gauge. The entrainment housing contained a nucleospot to reduce electrostatic charges and was maintained at a temperature of about 42°C to about 55°C, and most preferably about 55°C. This reduced coalescing of the aerosol droplets and was controlled by two Omega CN9000 series miniature microprocessor temperature controllers. The sample flow rate to the nebulizer was
30 controlled by a Harvard 11 infusion only syringe pump. The flow rate was 1 to 1200 μ l/min using a sterile Becton Dickinson 1cc plastic syringe with a 0.2 micron filter attached. The sample contained 10 mM Tris buffer (pH 7.0) and the molecules to be delivered.

As discussed previously, venting of excess aerosol which is reported in U.S. Pat. No. 5,240,842 is not necessary with the method of the invention. Unexpectedly, venting drastically reduced effectiveness of the method of the invention. The target tissue was placed on solidified agar medium in a petri dish on the stage, about 3 cm below the nozzle tip. The stage was
5 mounted on a XY - 4040 precision grade table (New England Affiliated Technologies) which was controlled by LabVIEW 5.0 software (National Instruments). The stage moved in a straight line at the rate of 20 - 80 mm/sec with about 0.3 mm to 1.0 mm distance between passes. Typically a run of 1.0 - 3.0 minutes was performed which covered about a 2.0 to 4.0 cm diameter area of target tissue. The chamber vacuum was maintained at around 26 to about 30 inches Hg
10 throughout a given run by a Welch 1405 DuoSeal vacuum pump. The vacuum created a pressure differential that was mediated through the nozzle. When the aerosol droplets produced by the nebulizer in the chamber of comparably high pressure passed through the nozzle, they greatly accelerated into the vacuum of the lower chamber. A small beaker of water was placed in the vacuum chamber to prevent loss of moisture from the target tissue. The nozzle was
15 preferably a luer-lock 24 gauge (305 um inside diameter) Becton Dickinson syringe needle cut off just proximal to the plastic holder. However, syringe diameters of about 200 to about 500 microns as well as nozzles known in the art, other than syringes, can be used.

Parameters will vary for particular plant tissues. Tissue which can withstand the damage caused by the beam may produce more transformants when subjected to a more intense barrage of aerosol droplets (produced by using a wider orifice, by slowing stage speed, or by decreasing
20 the distance between passes, for example).

Briefly, the treatment of target tissue with the aerosol beam apparatus was performed as follows: 1) place petri dish with tissue on the stage and close vacuum chamber; 2) start the vacuum pump; 3) start the syringe pump; 4) set the nebulizing gas pressure; 5) set the
25 entrainment gas pressure, and by this time the correct vacuum in the chamber is reached; and 6) start the movement of the stage and let the system run for the time needed to complete the run. After the run is completed, shut down the stage, vacuum, syringe pump, nebulizing gas, entrainment gas, and remove target tissue from the chamber.

30 Example 2

Introduction of nucleic acid into corn callus and detection of transient expression.

Embryogenic corn callus of Stine inbred 963 was transferred from stock culture maintenance medium, DN62 (Table 1) to a medium formulated to provide osmotic stress to the

tissue. A preferred embodiment of the invention, DN620SM medium was used (Table 1). Preferably the embryogenic callus was transferred two to three days after transfer to fresh maintenance medium, a time when the cells are dividing rapidly (for maintenance, cultures are routinely transferred every ten days). After at least 45 minutes (preferably an hour) and up to 24
5 hours on this medium, tissue was collected and oriented in the center of the target surface prior to beaming. After beaming, the tissue was allowed to incubate on DN620SM medium for one day.

The plasmid used in transient expression experiments was preferably pBARGUS which was obtained from the Plant Gene Expression Center, Albany, CA, although other plasmids known in the art can be used. Plasmid BARGUS contains a beta-glucuronidase (GUS)
10 expression cassette consisting of a GUS gene driven by the corn *adh1* promoter and *adh1* intron1 terminated with a *nos* terminator, and a *bar* expression cassette consisting of a *bar* gene driven by a CaMV 35S promoter and an *adh1* intron terminated with a *nos* terminator. The GUS expression cassette is used to detect transient expression while the *bar* expression cassette confers tolerance to the herbicide bialaphos. Thus, if desired, selection of stably transformed
15 clones could be achieved. Another plasmid used in transient assays was p350096, which has the CaMV 35S promoter, alcohol dehydrogenase intron six (IV6) driving the GUS gene which is terminated with the nopaline synthase (*nos*) 3' end. Approximately two micrograms of supercoiled plasmid DNA was added to 1.0 ml of the buffered solution, however, higher and lower concentrations of DNA can be used. For example, DNA concentrations as high as about
20 $20 \mu\text{g/ml}$ of DNA and as low as about $0.1 \mu\text{g/ml}$ to about $1.0 \mu\text{g/ml}$ were effective, although delivery was less effective when using $0.1 \mu\text{g/ml}$. In terms of number of DNA molecules, there are approximately 99 billion molecules in 1 μg of pBARGUS DNA. A DNA concentration of $0.1 \mu\text{g/ml}$ produced less transient expression than did $2.0 \mu\text{g/ml}$ while a DNA concentration of $1.0 \mu\text{g/ml}$ produced similar transient expression to $2.0 \mu\text{g}$. Higher concentrations than $2.0 \mu\text{g}$
25 produced marginally more intense transient expression. Supercoiled or linear DNA could be used in transient expression experiments, however, in this example supercoiled was preferred because of the ease of preparation. Plasmid DNA was isolated using Qiagen midi or maxi preps as described by the manufacturer.

The aerosol beam procedure used to transform corn callus was essentially as previously
30 described (Example 1). Preferred parameters included an entrainment tube or housing maintained at about 55°C with the sample solution flow rate set at about 0.5 ml/hour to about 1.0 ml/hour and the vacuum chamber pressure maintained at about 29 inches Hg. Treatment of target tissue with the aerosol beam typically continued for about one to about three minutes,

however, beaming can continue for as long as the target tissue can survive being held in a vacuum which, in the case of immature corn embryos and embryogenic callus, is at least 3 minutes.

Sterile technique was used routinely to prevent contamination of target tissue. A seventy percent ethanol solution was sprayed on the inside of the vacuum chamber and entrainment tube prior to the start of an experiment and the tubing attached to the nebulizer and the nebulizer itself were rinsed out with 70% ethanol which was followed by a wash with sterile water before adding the sample solution. Sterile water was replaced with the sample solution before treating the target tissue with the aerosol beam apparatus.

Approximately one day after treating the corn callus with the aerosol beam apparatus, transient expression was evaluated by histochemical analysis. Embryogenic callus was incubated in the presence of the substrate X-gluc (Gold Biotechnology, Inc.) at a concentration of 0.5 mg/ml in 0.1 M sodium phosphate buffer pH 7.0 and 0.1% Triton-x-100 at 37°C. After 1-4 hours blue spots appeared indicating GUS expression which verifies that the GUS expression cassette was introduced into the cell with the aerosol beam apparatus. Transient expression results were used to compare the efficiency of DNA delivery, using equivalent amounts of DNA, to embryogenic callus using either the method of the invention or a DuPont PDS 1000 particle delivery device. Delivery using the method of the invention was readily observed to be more efficient both in terms of the number of color forming units and the intensity of their color.

Table 1

Medium for Pretreatment, Beaming and Selection

<u>Ingredients in 1 liter</u>	<u>DN62</u>	<u>DN62AG</u>	<u>DN62AB</u>	<u>DN620SM</u>
N6 salts	3.98 g	3.98 g	3.98 g	3.98 g
N6 vitamins	1 ml	1 ml	1 ml	1 ml
Asparagine	800 mg	800 mg	800 mg	800 mg
Myo-inositol	100 mg	100 mg	100 mg	100 mg
Proline	1400 mg	1400 mg	1400 mg	1400 mg
Casamino acids	100 mg	100 mg	100 mg	100 mg
2,4_D	1 mg	1 mg	1 mg	1 mg
Sucrose	20 g	20 g	20 g	20 g
Glucose		10 g		

20

Table 1Medium for Pretreatment, Beaming and Selection

<u>Ingredients in 1 liter</u>	<u>DN62</u>	<u>DN62AG</u>	<u>DN62AB</u>	<u>DN620SM</u>
Sorbitol				45.5 g
Mannitol				45.5 g
AgNO ₃		10 mg	10 mg	
Bialaphos			1 mg	
5 Gelrite	3 g	3 g	3 g	3 g
pH	5.8	5.8	5.8	5.8

DN62B -- as for DN62 with the addition of 1mg/l bialaphos

DN62AGB -- as for DN62AG with the addition of 1 mg/l bialaphos.

10 N6 salts -- Sigma Plant Culture Catalogue ref. C1416

N6 vitamins: 2 mg/l glycine, 0.5 mg/l nicotinic acid, 0.5 mg/l pyridoxine HCl, 1 mg/l thiamine HCl (after Chu C.C. (1978)). The N6 medium and its application to anther culture of cereal crops. In: Proc. Symp. on Plant Tissue Culture. Sci. Press, Beijing, pp. 43-50.

15

Example 3Introduction of nucleic acid into immature corn embryos and detection of transient expression.

Immature embryos of Stine inbred 963 (10 days' post-pollination) were also used for transient expression experiments. In this case embryos were dissected out at between 1 mm and 20 2 mm in length and either used immediately or maintained for up to 10 days, preferably 2 to 3 days, on DN62AG medium (Table 1) prior to beaming. Forty-five minutes before beaming the embryos were transferred to DN620SM. After beaming as described in Example 2 for callus tissue, the embryos were allowed to remain on DN620SM for 30 minutes before final transfer to DN62AG for one day.

25

One day after treating immature embryos with the aerosol beam apparatus transient expression was evaluated by histochemical analysis. Immature embryos were incubated in the presence of the substrate X-gluc (Gold Biotechnology) at a concentration of 0.5 mg/ml in 0.1 M sodium phosphate buffer pH 7.0 and 0.1% Triton-x-100 at 37°C. After 1-4 hours blue spots appeared indicating GUS expression which verifies that the GUS expression cassette was

introduced into the cell with the aerosol beam apparatus. Transient expression results obtained using a DuPont PDS 1000 particle delivery device were compared with those obtained using the method of the invention. Equivalent amounts of DNA were used. Blue spots appeared more rapidly, were more numerous and more intense using the method of the invention.

5

Example 4

Introduction of nucleic acid into corn callus and detection of stable transformation.

The plasmids used for stable transformation preferably contained the bar expression
10 cassette from pBARGUS, as described previously. This cassette allowed for selection of a stable
transformants using the herbicide bialaphos. Plasmid pRBTBAR contained a Bt expression
cassette along with the bar expression cassette from pBARGUS. Plasmid pBARGFP contained
the bar expression cassette along with a gfp expression cassette. In the case of this plasmid the
bar expression cassette was from pSLJ2011 which was obtained from The Sainsbury Laboratory,
15 England. The bar gene was driven by the CaMV 35S promoter, TMV omega enhancer, and
terminated by the octopine synthase terminator (ocs). The gfp (EGFP) gene was obtained from
Clontech, Inc., and was driven by a CaMV 35S promoter and terminated with a CaMV 35S
terminator. For stable transformation experiments, the DNA concentration varied from 2 ug/ml
to 20 ug/ml and the DNA was either supercoiled or linear. The supercoiled DNA was isolated as
20 previously described (Example 2). The linear bar expression cassette was isolated by digesting
20 ug of pBARGUS with HindIII as described by the manufacturer Promega, separated on a 1%
agarose gel as is common in the art and extracted from the agarose gel using Qiaex II as
described by the manufacturer (Qiagen). Usually 50% of the DNA found in a band was
recovered which would have been the equivalent in moles to 10 ug pBARGUS.

25 Embryogenic callus, maintained on DN62, is transferred off DN62 1 to 10 days,
preferably 3 to 6 days, after the previous transfer and placed on DN620SM for 45 minutes prior
to beaming. After beaming as described in Example 1, callus was allowed to remain on this
medium for 30 minutes. The beamed tissue was then transferred to DN62B (see Table 1) for
selection. Various selection schemes were tested and were successful including selection on
30 bialaphos at concentrations of up to 10 mg/l. Success in selection was enhanced by the use of the
gfp gene in combination with the bar gene, allowing for visual selection of fluorescing
transformed tissues.

Example 5

Regeneration of stably transformed corn callus

A preferred pathway used to produce stably transformed plants from beamed embryogenic callus (Stine 963) was performed as follows: after beaming on DN620SM, the callus was transferred to DN62B and cultured for a passage of 14 days; after this period it was transferred again to further passages of fresh DN62B medium; after between three and six passages on DN62B clones were identified by growth in the presence of bialaphos (Table 1).

Clones were induced to regenerate plants by selecting actively growing Type II callus from clonal tissue, with the objective of obtaining a high frequency of so-called "water tower" embryo structures (U.S. Serial No. 09/203,679 incorporated herein). This type of tissue is preferred because regeneration of whole plants is improved. These tissues were then transferred to DNROB (Table 2). On this medium embryo maturation occurs. Maturing tissues were then transferred off DNROB after two to three weeks either to a fresh plate of DNROB or to 0.1NABA6S (Table 2). After a further one to two weeks, embryos with a shoot meristem were placed on MSOG medium (Table 2) or 1/2MSIBA (Table 2), where germination occurs. Plantlets were then transferred to tubes containing 1/2MSIBA medium for promotion of further root and shoot development prior to final transfer to soil.

Table 2

		<u>Media for Regeneration</u>			
<u>Ingredients in 1 liter</u>	<u>DNROB</u>	<u>0.1NABA6S</u>	<u>MSOG</u>	<u>1/2MSIBA</u>	
MS Salts	4.43 g	4.43 g	4.43 g	2.215 g	
Asparagine	800 mg				
Proline	1400 mg				
Na ₂ EDTA	37.3 mg	37.3 mg	37.3 mg	37.3 mg	
Casamino acids	100 mg				
Nicotinic Acid	0.5 mg				
1-naphthaleneacetic acid		0.1 mg			
Abscisic acid		0.1 mg			
Gibberellic Acid			0.1 mg		
Indole 3 Butyric Acid				0.1 mg	
Sucrose		60 g	30 g	20 g	

Table 2

		<u>Media for Regeneration</u>			
20	<u>Ingredients in 1 liter</u>	<u>DNROB</u>	<u>0.1NABA6S</u>	<u>MSOG</u>	<u>1/2MSIBA</u>
	Sorbitol	20 g			
	Bialaphos	1 mg			
	Gelrite	2 g			
	Phytagar		7 g	7 g	7 g
5	pH	5.8	5.8	5.8	5.8

The presence of an expressing bar gene was confirmed in the regenerants by leaf painting with Liberty. Mendelian ratios of an expressing bar gene were routinely observed in the progeny of the regenerants (Table 3).

10

Table 3

	<u>Target</u>	<u>Liberty</u>	<u>Liberty</u>		
	<u>Tissue</u>	<u>Resistant</u>	<u>Sensitive</u>	<u>Ratio</u>	
	Regenerant* 2--Event B1	Callus	77	23	3:1
	Regenerant 8--Event B2	Embryo	60	18	3:1
	Regenerant 2--Event B3	Embryo	74	25	3:1
15	Regenerant 1--Event B5	Callus	71	26	3:1
	Regenerant 7--Event B6	Callus	58	41	1.4:1

* Regenerant number refers to the number of the plant regenerated from the indicated "Event".

20

Example 6

Introduction of nucleic acid into immature corn embryos
and detection of stable transformation.

Immature embryos of Stine 963 were excised from kernels usually around 10 days' post-pollination. At this time the embryos were around 1.0 to 1.5 mm in length. Embryos were then placed on DN62AG medium for two to three days. After this time they were then placed on DN62OSM for 45 minutes prior to beaming. After beaming as described in Example 1, the embryos remained on DN62OSM for 30 minutes and then were transferred either to DN62AG for five days prior to transfer to DN62AGB, or to DN62AGB directly (Table 1).

Example 7

Regeneration of stably transformed corn embryos.

After a further week's culture the corn embryos from Example 6 were then transferred to DN62AB (Table 1). After several 14-day passages on DN62AB, clones can then be selected.

5 Clonal tissue was induced to regenerate plants according to the description in Example 5.

In one experiment 44 immature embryos were beamed and 5 clones were recovered (11.3%) which gave rise to transformed plants. The presence of an expressing bar gene was confirmed in these clones as described in Example 4.

Segregation of expression of the bar gene in Stine elite inbred 963 after transformation using the method of the invention is shown in Table 3. All regenerants were selfed. Heritability of the DNA inserted by the method of the invention was reflected in the expected ratios for inheritance of a single dominant gene in the progeny of transformed plants. The fertility of the transgenic plants produced using the method of the invention is comparable to that of nontransformed regenerated plants of the same inbred.

15 Transformation frequency using immature embryos of Stine elite inbred 963 and the DuPont PDS-1000 particle gun was around 1% (after bombardment of several thousand embryos). With the method of the present invention, success rates of up to 20% were noted with an average of around 3% over all experiments.

20 Example 8

Improved growth rate of soybean embryogenic callus.

In another embodiment of the present invention, a novel culture media may be used to stimulate high frequency production of embryogenic soybean callus. Improvement varied with the genotype being cultured. The length of time required for a culture passage was unexpectedly reduced to two weeks with the use of this novel medium as compared to four weeks typical with other media. The inclusion of one or more of four media constituents, coconut water, myoinositol, phytic acid and inorganic phosphate concentration, enhanced embryogenic callus production and allowed significant improvements to be made to transgenic clone production in terms of number of clones recovered, embryo morphology, and reduction in the time needed to identify the clones and regenerate plants from them. The medium of Ranch et al., 1985 (referred to herein as B1-30) was used as the basal medium. An example of the medium of the present invention is B1-30 3Co5My0.25PA0.5K (footnote, Table 5). Although this medium is a

preferred embodiment of growth medium, other conventional media may be utilized in the practice of the invention.

Coconut water has been included in tissue culture media for over 50 years. Coconut water is liquid taken from coconuts to promote growth in plant tissue cultures. It is deproteinized then filter-sterilized. An example is Sigma Biosciences' Cat. No. C5915. The beneficial effects of coconut water were first noted by Overbeek et al., 1941, when it was found to permit the growth in culture of heart-stage *Datura* embryos. In subsequent years, Steward and others showed that coconut water was capable of stimulating responses from a variety of plant tissues (Steward et al., 1969). Most commonly coconut water is used at concentrations of between 5% and 10% by volume of the final culture medium. The role of coconut water in stimulating the growth of embryogenic callus in soybean was investigated and it was discovered that its effect on cotyledon explants routinely used to initiate embryogenic callus of soybean was detrimental when tested at these concentrations. No embryogenic callus was produced in these experiments. However, when coconut water was added to media used for the maintenance of embryogenic callus, an unexpected beneficial effect was noted in terms of rate of growth and quality of somatic embryo morphology. In view of this result, coconut water was routinely included in media for the maintenance of embryogenic callus at concentrations of between 3% and 6% by volume of the final culture medium.

One key component of coconut water is myoinositol (Pollard et al., 1961). In an attempt to improve the growth of embryogenic soybean callus with components of coconut water, it was discovered that myoinositol was effective in this regard. Myoinositol has been included in tissue culture media for a variety of plant species. Although apparently not required for all species (Halperin, 1966), it is routinely included in media such as the widely used Murashige and Skoog formulation (Murashige and Skoog, 1962) at a concentration of 100 mg/l. It is at this concentration that it has been included in media used for the culture of embryogenic callus of soybean (e.g., see Ranch et al., 1985). Unexpected results revealed a pronounced and beneficial effect of myoinositol when used at much higher concentrations (up to 10 g/l) alone or in combination with coconut water.

There are no known reports of the inclusion of phytic acid in culture media for any plant species. Soybean seeds are rich in natural chelating agents, the most prominent of which is phytic acid (Gibson and Ullah, 1990). Substantial amounts of phosphate are stored in seeds in the form of phytate (Raboy, 1990). It is possible that the capacity of phytic acid to sequester inorganic phosphate has a significant impact upon C partitioning into either starch or sucrose. At

1 gm/l in B1-30, embryogenic callus of a range of genotypes exuded starch, possibly confirming the impact of phytic acid on C partitioning. Surprisingly, after this initial effect the soybean callus grew very vigorously and produced many small globular embryos. Further experiments indicated that phytic acid at 1, 5, 10, 50, 100, 250, 500 and 1000 mg/l in B1-30 significantly increased the rate of growth of embryogenic callus during the initial culture passage and/or during maintenance as a stock culture. At 3000 mg/l a clear detrimental effect was observed and embryogenic callus browned and died. Best results over many passages were obtained with the addition of about 5 mg/l to about 250 mg/l phytic acid to the culture medium depending on the genotype.

10 Inorganic phosphorous in the form of KH_2PO_4 , in excess of the amount conventionally used, was added to the base medium (B1-30) along with myoinositol and coconut water. This medium was tested against B1-30 supplemented with phytic acid in addition to KH_2PO_4 , myoinositol and coconut water. Beneficial effects were noted with 500 and 1000 mg/l both with and without phytic acid.

15

Table 4Growth Media for Soybean*

<u>Ingredients in 1 Liter</u>	<u>B1-30</u>	<u>B3</u>	<u>B5G</u>
Ms Salts	4.43 g	4.43 g	
B5 Salts			3.19 g
20 NaEDTA	37.3 mg	37.3 mg	37.3 mg
2,4-D	30 mg		
Activated Charcoal		5g	
Phytagar	8 g	8 g	
Gelrite			2 g
25 pH	5.8	5.8	5.8

*Variations of media referred to in Table 4 were tested, e.g., B1-30 3Co5My, which was made made by adding 3% coconut water and 5 gm/l myoinositol to B1-30. Other variations included: B1-30 3Co5My0.25 PA0.5K which contained B1-30 basal medium plus 3% coconut water, 5 gm/l myoinositol, 0.25 gm/l phytic acid, and 0.5 gm/l additional KH_2PO_4 and ½ B5G which contained all ingredients of B5G medium at half strength.

30

Using the improvements described above, new and effective media were developed for the production of embryogenic soybean callus from a variety of elite genotypes. (See Example 9). The media of the present invention are effective for a range of germplasm and also greatly reduce the time required to obtain embryogenic callus in sufficient quantity for

5 transformation experiments.

Example 9

Culture of soybean callus.

To initiate cultures, pods were surface sterilized and embryos with immature cotyledons 3 to 4 mm in length were excised. Individual cotyledons were then cultured on B1-30 medium 10 (Table 4) or on B1-30 media containing 100 to 1000 mg/l phytic acid. Typically, a small amount of embryogenic callus proliferated from some of these cotyledon explants. This callus was then excised and transferred to a B1-30 medium containing between 3% and 6% coconut water or/and between 1 g/l and 10g/l myoinositol. The coconut water and myoinositol requirements for 15 optimum sustained embryogenic callus growth were found to vary according to genotype. Exemplary results using a range of concentrations of these components are summarized in Table 5.

Table 5

Comparative Growth Response

<u>Stine Genotype</u>	<u>Media</u>	<u>Response</u>
20 96E750	B1-30 3Co 10My	best
96E750	B1-30 3Co 5My	good
96E750	B1-30 3Co	good
96E750	B1-30	worst
25 96E692	B1-30 3Co 5My	best
96E692	B1-30 6Co 5My	v. good
96E692	B1-30 3Co 3My	v. good
96E692	B1-30 3Co 1My	good
96E692	B1-30 3Co	good
30 96E692	B1-30 3Co 10My	fair
96E692	B1-30	worst

Table 5
Comparative Growth Response

	<u>Stine Genotype</u>	<u>Media</u>	<u>Response</u>
20	98CB371	B1-30 3Co 10My	best
	98CB371	B1-30 3Co 5My	good
	98CB371	B1-30	worst
	98CB166	B1-30 3Co 10My	best
5	98CB166	B1-30 3Co 5My	good
	98CB166	B1-30	worst

In other experiments it was unexpectedly discovered that further enhancement of embryogenic callus formation was possible by addition of about 1 to about 1000 mg/l of phytic acid and/or additional inorganic phosphate in the form of KH_2PO_4 to B1-30 with myoinositol and coconut water. The amounts required for improvement vary with genotype. With these two additional constituents, suitable amounts of embryogenic callus for transformation experiments can be obtained within three to six months, a significant improvement over the year or 18 months typically required for elite genotypes on standard media, such as B1-30.

Also effective in preparing tissue for beaming is a brief exposure to coconut water, myoinositol and about 1 gm/l phytic acid for from about 3 to 10 days immediately before beaming. Embryogenic callus taken off this medium and beamed directly grows vigorously after beaming in the period before exposure to a selection agent such as bialaphos (Example 11) allowing for greater survival and growth of transformed cells. This improved survival increases the chances of clone identification during selection.

Example 10

Introduction of nucleic acid into soybean callus and detection of transient expression

The apparatus, parameters and beaming method used to introduce nucleic acid into soybean callus were essentially as described in Example 1, unless otherwise indicated in this Example 2. The sample solution containing DNA was prepared as previously described (Example 2).

Embryogenic soybean callus of Stine 13404-TT was transferred after a culture passage of about 28 to 30 days from stock culture medium (B1-30 3Co5My 50 mg/l phytic acid - Table 4) to

the center of a target plate containing the same medium. Embryogenic soybean callus can survive being held in a vacuum for at least 10 minutes. After one to three days' growth on the target plate, the soybean embryogenic callus is exposed to an aerosol beam of pSLJ4K1 (the 35 S promoter driving the gus gene). After beaming the tissue is spread out on a fresh plate (to minimize the risk of contamination) of the same medium.

Approximately one day after treating the soybean callus with the aerosol beam apparatus, transient expression was evaluated by histochemical analysis. Embryogenic callus was incubated in the presence of the substrate X-gluc (Gold Biotechnology, Inc.) at a concentration of 0.5 mg/ml in 0.1 M sodium phosphate buffer pH 7.0 and 0.1% Triton-x-100 at 37°C. After 1-4 hours blue spots appeared indicating GUS expression which verifies that the GUS expression cassette was introduced into the cell with the aerosol beam apparatus. Transient expression results were used to compare the efficiency of DNA delivery, using equivalent amounts of DNA, to embryogenic callus using either the method of the invention or a DuPont PDS 1000 particle delivery device. Delivery using the method of the invention was readily observed to be more efficient both in terms of the number of color forming units and the intensity of their color.

Example 11

Introduction of nucleic acid into soybean embryogenic callus and detection of stable transformation.

The plasmids used to stably transform soybean were pSB12BARAHAS and pNPTAHAS. Plasmid SB12BARAHAS contained the bar expression cassette from pSLJ2011 which consisted of a CaMV 35S promoter, TMV omega enhancer, bar gene, and nos terminator. Plasmid SLJ2011 was obtained from The Sainsbury Laboratory at The John Innes Center, England. The bar expression cassette was combined with a genomic fragment from *Arabidopsis* harboring a mutant ahas gene (American Cyanamid). Plasmid pNPTAHAS contained an npt (neomycin phosphotransferase) expression cassette consisting of a CaMV 35S promoter, TMV omega enhancer, npt gene, and ocs terminator, and the same ahas expression cassette described above. The npt expression cassette was from plasmid SLJ481 (Sainsbury Laboratory, John Innes Center, England). The npt expression cassette provides tolerance to the antibiotic kanamycin and the bar expression cassette provides tolerance to the herbicide bialaphos. For purposes of example, supercoiled DNA was used, however, linear DNA can be expected to work equally well. DNA concentration varied from 2 ug/ml to 20 ug/ml. For pSB12BARAHAS approximately 64 billion molecules of DNA were delivered per 1ug.

Embryogenic calluses of several Stine elite varieties, including 96E750, 96E94, 97E986, 96E144 and 96E692, were separately collected into the center of plates of B1-30 3Co5My or B1-30 3Co5My0.25PA0.5K (Table 4) three days after transfer to fresh medium. The tissue was then beamed with one of the plasmids described above. After beaming the embryogenic callus was transferred to fresh B1-30 3Co5My or B1-30 3Co5My0.25PA0.5K for one passage of a month. The tissue was then transferred to selective medium containing either 300 mg/l kanamycin or 1 mg/l bialaphos depending on the plasmid used. With bialaphos, selection typically was maintained at 1 mg/l for the first two one-month passages and then increased to 2 mg/l for the following three to seven months. On both bialaphos and kanamycin clones were identified after between five and nine transfers on selective medium. Clones were identified when tissue generated by transformation experiments began to grow vigorously on medium containing a selective agent. Once identified, clonal tissue was allowed to increase and was then regenerated into plants according to the following protocol: (1) Embryogenic structures were transferred off B1-30 3Co5My or B1-30 3Co5My0.25PA0.5K to B3 medium (Table 4); (2) after 3 to 4 weeks' growth on this medium clusters of maturing embryos were separated out into individual structures and either maintained on the same plate or transferred to fresh medium; (3) after another 3 to 4 weeks maturing embryos were transferred to B5G medium (Table 4) containing activated charcoal and placed in the light; (4) embryos which then elongated and produced roots were transferred to tubes containing ½ B5G medium (Table 4) with no activated charcoal where they continued development into plantlets; and (5) these plantlets were removed from the tubes and placed into pots.

Transformation frequency with embryogenic callus of elite Stine soybean lines was greater using the method of the invention than that achieved in similar experiments using the Dupont particle gun. This result was consistent with the results obtained for transient expression in embryogenic soybean callus where greater delivery of DNA was observed using the method of the invention when compared to the Dupont gun. The presence of an expressing bar gene or an expressing ahas gene was confirmed by leaf painting (bar) or spraying (ahas). Mendelian ratios of the expressing genes were routinely observed in the progeny of the regenerants.

30

Example 12

Transformation of bacteria

Transformation of bacteria using the method of the invention was accomplished as follows: competent *E. coli* DH5 alpha (Gibco BRL) or HB101 cells were thawed on ice and 5 to

50 microliters were combined with 0.2 ml LB broth. The mixture was pipetted to the center of a plate of LB agar (1.5%) containing 100 mg/l ampicillin and allowed to dry. Aerosol beam parameters were the same as those described previously (Example 1) except as noted in this Example. A pUC-derived plasmid encoding for resistance to the antibiotic ampicillin was delivered to the bacterial cells, as is known in the art. The concentration of DNA ranged from about 1.0 to 1000 $\mu\text{g/ml}$ in 10 mM Tris (pH7.0). The nebulizing pressure was from about 10 to about 40 psi, preferably 30 to 40 psi. The entrainment temperature was maintained in a given experiment and ranged between experiments from about 24° to about 55° C, and was preferably maintained at about 42° to about 55° C and most preferably at about 55° C. Various sample flow rates were tested ranging from about 0.25 to about 2.0 ml/hour. Preferably the flow rate was at 0.5 to 1.0 ml/hour and most preferably 1.0 ml/hour.

The stage on which the bacterial cells were placed was located at a distance of from about 1.5 cm to about 5.0 cm from the end of the nozzle with a preferred distance of between about 1.5 cm and about 3.2 cm. The speed at which the stage moved during beaming was adjusted to about 10 mm/sec to about 100 mm/sec with a preferred speed of about 20 mm/sec to about 100 mm/sec. The distance between passes was varied from about 0.2 mm to about 1.0 mm. Most preferable distance between passes was about 0.3 mm to about 0.4 mm.

The vacuum in the sample chamber was varied from about 26 psi to about 30 psi with best results obtained at the higher vacuum pressures, for example 29 psi. Nozzles with orifices of about 254 to 500 microns were used. Preferable were nozzles with diameters of about 300 to about 330 microns.

After beaming, plates were incubated at 37° C for 15 to 20 hours. No growth was observed in the control without DNA, however, when DNA was introduced, growth of thousands of transformed colonies was evident. As a control, the same sample of DNA which was beamed was sprayed on the cells using the same nebulizer used with the aerosol beam apparatus but with no supersonic acceleration of aerosol droplets. No transformed colonies resulted from this treatment. As an additional control, bacteria were bombarded with tungsten particles coated with the same pUC-derived plasmid using the particle gun and a protocol essentially as described by Smith et al. (1992). This protocol produced no transformants. The protocol of Smith et al. (1992), was altered in the practice of the present invention in that the relative humidity was not adjusted nor was osmoticum used.

Example 13

Use of the method of the invention to increase transformation frequency

Transformation frequency in plants can be increased by introducing restriction enzymes simultaneously with the transforming DNA using the method of the present invention.

5 Parameters for the aerosol beam apparatus are as described previously for plant cells (Example 1). Corn and soybean target tissue are prepared as described previously (Examples 4 and 5). For selection of transformants, a number of different selective agents can be used including, but not limited to, bialaphos, kanamycin, hygromycin, and imazapyr. By way of illustration, selection using imazapyr and mutant AHAS genes is described.

10 Plasmid pCD220 carries a mutant corn AHAS gene. Expression of this gene in corn confers resistance to the herbicide Arsenal (active ingredient imazapyr) manufactured by American Cyanimid. The plasmid is digested with the restriction enzyme Xba I as described by Promega. The linearized DNA fragment carrying the gene and regulatory elements necessary for expression in corn are separated from the remaining plasmid DNA in a 1% agarose gel as
15 practiced in the art. The genomic DNA is then purified from the gel using the QIAEX II gel extraction kit according to the manufacture (Qiagen). About 10 micrograms of linear DNA with Xba I compatible ends and 200 units of Xba enzyme are combined in 1 ml of 10 mM Tris pH 7.0, or in 1 ml of a buffer solution recommended for Xba I by the manufacturer (Promega). The solution containing the DNA and the enzyme is then beamed into corn cells as previously
20 described. Transformants are selected as described previously. The simultaneous introduction of DNA with the appropriate restriction enzyme can significantly increase the frequency of transformation.

A mutant AHAS gene from *Arabidopsis* can be introduced into soybean cells using the same methods. Plasmid AC321 is digested with Xba I as described above for plasmid pCD220.
25 This *Arabidopsis* genomic fragment is then used for transformation of soybean together with the Xba I restriction enzyme. Again, the number of transformants obtained using the enzyme together with the DNA can be significantly higher than when using the DNA alone.

Example 14

Introduction of carbohydrate and plant growth regulator into cells

30 Glucose and 2,4-D were introduced into cells of cultured immature embryos of Stine corn inbred 963 by the method of the present invention. Preparation of embryos and parameters for the aerosol beam apparatus were the same as described for Example 6. Glucose was used at a

concentration of 1 gm/l. 2,4-D was used at a concentration of 0.1 mg/l. After beaming with pBARGUS, glucose, and 2,4-D, stably transformed clonal tissue was selected and plants regenerated as described in Example 7. A significant increase (2 to 10 fold) in the number of clones recovered was noted from embryos beamed with glucose, 2,4-D and DNA when compared with embryos beamed with DNA alone.

Example 15

Introduction of protein into cells

The protein glucuronidase was introduced into embryogenic callus cells of Stine corn inbred 963 by the method of the present invention. Target preparation and aerosol beam parameters were as described in Example 2. Glucuronidase from Sigma (cat # G2035) was used at a concentration of 320 $\mu\text{g/ml}$ in 10 mM Tris (pH 7.0). After treating of corn callus with the aerosol beam apparatus, the tissue was incubated in X-gluc substrate, as described in Example 2. After 1 to 4 hours blue spots appeared indicating the intracellular presence of GUS. The intracellular presence of GUS was then confirmed by microscopic examination. As a control, protein was applied to the surface of the embryogenic callus with an atomizer and the callus was then incubated for about 1 to 4 hours in x-gluc substrate. No blue spots were observed with this treatment.

Example 16

Introduction of DNA together with other molecules into cells

DNA and protein were simultaneously delivered into bacterial cells. Preparation of bacteria and parameters for the aerosol beam apparatus were the same as described previously for delivery of DNA into bacteria (Example 12). The same buffer, plasmid, and plasmid concentration was used as described in the transformation of bacteria. Ribonuclease A (RNASE A) (Sigma cat. no. R6513) was added to the DNA sample at a final concentration of 2.5 $\mu\text{g/ml}$. After the sample of DNA and RNASE A was beamed into bacteria, no colonies were observed on medium containing ampicillin indicating the cytotoxic effect of RNASE A in the cells.

As a control, RNASE A at the same concentration used for beaming was pipetted on the cells after the cells were beamed with DNA only. Here, transformed colonies grew indicating that the RNASE A was not taken up naturally by the cell. To verify that the RNASE A was not degrading the plasmid, the plasmid treated with RNASE A was run on a standard 1% agarose gel. After staining the DNA with ethidium bromide, the DNA appeared intact and no

degradation was evident. As a further control, RNASE A was inactivated with diethylpyrocarbonate (DEP). Inactivation was carried out as follows: 2.5 micrograms of RNASE A was added to 1.0 ml 10 mM Tris (pH 7.0), then 4.0 μ l of DEP was added. This mixture was vortexed and incubated for 2 - 4 hours at room temperature, after which time, gases were evacuated from the tube by heating the mixture to 85°C for 15 minutes with the cap of the tube off. DNA was then added and the sample beamed into cells. The introduction of DNA and inactivated RNASE A resulted in the normal transformation of bacteria. Thus, the addition of RNASE A to the DNA did not prevent the DNA from entering the cell. From these experiments it follows that both DNA and protein were delivered together into bacterial cells.

10 While the invention has been disclosed in this patent application by reference to the details of preferred embodiments of the invention, it is to be understood that the disclosure is intended in an illustrative rather than a limiting sense, as it is contemplated that modifications will readily occur to those skilled in the art, within the spirit of the invention and the scope of appended claims.

LIST OF REFERENCES

- Anand, R. (1992) *Techniques for the Analysis of Complex Genomes* (Academic Press).
- Ausubel, F.M., et al. (1992). *Current Protocols in Molecular Biology* (J. Wiley and Sons, N.Y.)
- 5 Bilang, R., et al. (1998). "Containing excitement over transplastomic plants". *Nature Biotechnology* 16:333-334.
- Bonnassie, S., et al. (1990). "Transfer of plasmid DNA to *Brevibacterium Lactofermentum* by electrotransformation". *Journal of General Microbiology* 136:2107-2112.
- 10 Boynton, J.E., et al. (1988). "Chloroplast transformation in *Chlamydomonas* with high velocity microprojectiles". *Science* 240:1534-1538.
- 15 D'Halluin, K., et al. (1992). "Transgenic maize plants by tissue electroporation". *Plant Cell* 4:1495-1505.
- Dagher, S.F., et al. (1991). "Phenotypic conversion of TK deficient cells following electroporation of functional TK enzyme". *Exp. Cell Res.* 198:36-42.
- 20 Donn, G., et al. (1990). "Stable transformation of maize with a chimeric modified phosphinothricin acetyl transferase gene from *Streptomyces viridochromogenes*". In: Abstracts VIIth International Congress on Plant Cell and Tissue Culture, IAPTC, A2-38:53.
- 25 Duncan, D.R., et al. (1985). "The production of callus capable of plant regeneration from immature embryos of numerous *Zea mays* genotypes". *Planta* 165:322-332.
- Frame, B.R., et al. (1994). "Production of fertile transgenic maize plants by silicon carbide whisker-mediated transformation". *The Plant Journal* 6:941-948.
- 30 Fromm, M.B., et al. (1990). "Inheritance and expression of chimeric genes in the progeny of transgenic maize plants". *Bio/Technology* 8:833-839.

- Fromm, M.B., et al. (1986). "Stable transformation of maize after gene transfer by electroporation". *Nature* 319:791-793.
- Gelvin, et al. (1990). *Plant Molecular Biology Manual* (Eds.).
- 5 Gibson, D.M., and Ullah, A.B.J. (1990). "Phytases and their action on phytic acid. In: Inositol metabolism in plants. *Plant Biology*, vol. 9. Eds., D.J. Morre, W.F. Boss and F.A. Loewus, Wiley-Liss, New York, pp. 77-92.
- 10 Glover, D. (1985). *DNA Cloning, I and II* (Oxford Press).
- Gordon-Kamm, W.J., et al. (1990). "Transformation of Maize Cells and Regeneration of Fertile Transgenic Plants". *The Plant Cell* 2:603-618.
- 15 Green, C.E., et al. (1975). "Plant regeneration from tissue cultures of maize". *Crop Science* 15:417-421.
- Grierson et al. (1984). *Plant Molecular Biology* (Blackie, Glasgow).
- 20 Guthrie, G., and Fink, G.R. (1991). *Guide to Yeast Genetics and Molecular Biology* (Academic Press).
- Halperin, W. (1966). *Am. J. Bot.* 53:443-453.
- 25 Hanahan, D. (1983). "Studies on transformation of *Escherichia coli* with plasmids". *Journal of Molecular Biology* 166:557-580.
- Hinchee, M.A.W., et al. (1988). "Production of transgenic soybean plants using *Agrobacterium*-mediated DNA transfer." *Bio/Technology*, 6:915-922.
- 30 Ishida, Y., et al. (1996). "High efficiency transformation of maize (*Zea mays L.*) mediated by *Agrobacterium tumefaciens*". *Nature Biotechnology* 14:745-750.

Kaeppler, H.F., et al. (1990). "Silicon carbide fiber-mediated DNA delivery into plant cells". *Plant Cell Reports* 9:415-418.

Kindle, K.L., et al. (1991). "Engineering the chloroplast genome: Techniques and capabilities
5 for chloroplast transformation in *Chlamydomonas reinhardtii*". Proceeding of the National
Academy of Sciences (PNAS) 88:1721-1725.

Klebe, R. J., et al. (1983). "A general method for polyethylene-glycol-induced genetic
transformation of bacteria and yeast". *Gene* 25:333-341.

10

Klein, T.M., et al. (1988(a)). "Transfer of foreign genes into intact maize cells using high
velocity microprojectiles". PNAS 85:4305-4309.

15

Klein, T.M., et al. (1988(b)). "Factors influencing gene delivery into *Zea mays* cells by high
velocity microprojectiles". *Bio/Technology* 6:559-563.

Koziel, M.G., et al. (1993). "Field performance of elite transgenic maize plants expressing an
insecticidal protein derived from *Bacillus thuringiensis*". *Biotechnology* 11:194-200.

20

Kuspa, A., and Loomis, W.F. (1992). "Tagging developmental genes in Dictyostelium by
restriction enzyme-mediated integration of plasmid DNA". PNAS 89:8803-8807.

Laursen, C.M., et al. (1994). "Production of fertile transgenic maize by electroporation of
suspension culture cells". *Plant Molecular Biology* 24:51-61.

25

Lowe, K., et al. (1995). *Biotechnology* 13:677-682.

Maniatis, et al. (1982). *Molecular Cloning* (Cold Spring Harbor Laboratories, Cold Spring
Harbor, N.Y.).

30

McCabe, D.E., et al. (1988). "Stable transformation of soybean (*Glycine max*) by particle
acceleration." *Bio/Technology* 6:923-926.

- Minor, H. (1998). "Production: Performance of GMO's vs Traditional varieties, Southern Perspective." In: Proceedings of the 28th Soybean Seed Research Conference, ASTA, Dec. 9-10 (in press).
- 5 Murashige, T., and Skoog, F. (1962). "A revised medium for rapid growth and bioassays with tobacco tissue cultures." *Physiol. Plantarum*, 15:473-497.
- Neuhaus, G., et al. (1994). "Tissue-specific expression of as-1 in transgenic tobacco". *Plant Cell* 6:827-834.
- 10 Neuhaus, G., et al. (1987). "Transgenic rapeseed plants obtained by the microinjection of DNA into microspore-derived embryos". *Theoretical and Applied Genetics* 75:30-36.
- Omirulleh, S., et al. (1993). "Activity of a chimeric promoter with the doubled CaMV 35S enhancer element in protoplast-derived cells and transgenic plants in maize". *Plant Mol. Biol.*
- 15 21:415-428.
- Oplinger, E.S. (1988). "Production: Performance of GMO's vs. Traditional varieties, Northern Perspective." In: Proceedings of the 28th Soybean Seed Research Conference, ASTA, Dec. 9-11
- 20 (in press).
- Overbeekm J. van, et al. (1941). "Factors in coconut milk essential for growth and development of very young *Datura* embryos." *Science*, 94:350-351.
- 25 Paszkowski, J., et al. (1984). "Direct gene transfer to plants". *EMBO* 3:2717-2722.
- Pollard, J.K., et al. (1961). "Hexitols in coconut milk: Their role in nurture of dividing cells." *Plant Physiol.* 36:492-501.
- 30 Ranch, J.P., et al. (1985). "Plant regeneration from embryo-derived tissue cultures of soybeans." *In Vitro* 21:653-658.

- Rhodes, C., et al. (1988). "Plant Regeneration from Protoplasts Isolated from Embryogenic Maize Cell Cultures." *Bio/Technology* 6:56-60.
- Rhodes, C., et al. (1988). "Genetically transformed maize plants from protoplasts". *Science* 5 240:204-207.
- Russell, J.A., et al. (1992). "Major improvements in biolistic transformation of suspension-cultured tobacco cells". *In Vitro* 28P:97-105.
- 10 Sambrook, et al. (1989). *Molecular Cloning: A Laboratory Manual, 2nd. Ed.* (Cold Spring Harbor Laboratory Press, Cold Spring Harbor, N.Y.).
- Sanford, J.C., et al. (1987). "Delivery of substances into cells and tissues using a particle bombardment process". *Journal of Particle Science Technology* 5:27-37.
- 15 Sautter, C., et al. (1991). "Micro-targeting: High efficiency gene transfer using a novel approach for the acceleration of micro-projectiles". *Bio/Technology* 9:1080-1085.
- Schiestl, R.H., and Petes, T.D. (1991). "Integration of DNA fragments by illegitimate recombination in *Saccharomyces cerevisiae*". *PNAS* 88:7585-7589.
- 20 Steward, F.C., et al. (1969). "Growth and morphogenesis in tissue and free cell cultures." *In: Plant Physiology – A Treatise*, Ed. F.C. Steward, Vol. VB: Analysis of growth: responses of cells and tissues in culture, Academic Press, New York and London, pp. 329-376.
- 25 Trick, H.N., and Finer, J.J. (1997). "SAAT: sonication-assisted *Agrobacterium*-mediated transformation." *Transgenic Research* 6:329-336.
- Wei, Z., and Xu, Z. (1988). "Plant regeneration from protoplasts of soybean (*Glycine max L.*)" 30 *Plant Cell Reports* 7:348-351.

Widholm, J.M. (1995). "Leguminous plants." *In: Transformation of Plants and Soil Microorganisms*, Eds., K. Wang, A. Herrera-Estrella and M. Van Montagu, Cambridge University Press, pp. 101-124.

- 5 Wilson, H.M., et al. (1995). "Maize In: Transformation of plants and soil microorganisms". Cambridge University Press, Cambridge.

Patents and Patent Applications:

Zhao, Z.Y., et al., published PCT WO 98/32326 published in 1988.

- 10 U.S. Patent No. 4,743,548
U.S. Patent No. 5,240,842
U.S. Patent No. 5,384,253
U.S. Patent No. 5,472,869
U.S. Patent No. 5,550,318
15 U.S. Patent No. 5,591,616
U.S. Patent No. 5,877,023

CLAIMS

1. A method for the introduction of molecules into a cell, comprising:
 - (a) providing a solution containing said molecules;
 - (b) producing aerosol droplets comprising said molecules;
 - 5 (c) accelerating said aerosol droplets toward said cell; and
 - (d) impacting said cell with said accelerated aerosol droplets.

2. The method of claim 1, wherein said molecules are selected from the group consisting of carbohydrates, nucleotide sequences, plant growth regulators, peptides, and combinations
10 thereof.

3. The method of claim 2, wherein said molecules comprise carbohydrates.

4. The method of claim 2, wherein said molecules comprise nucleotide sequences.

15
5. The method of claim 2, wherein said molecules comprise plant growth regulators.

6. The method of claim 2, wherein said molecules comprise peptides.

- 20 7. The method of claim 1, wherein said cell is selected from the group consisting of plant cell, animal cell, and bacterial cell.

8. The method of claim 7, wherein said cell is a plant cell.

- 25 9. The method of claim 8, wherein said plant cell is a monocotyledonous plant cell.

10. The method of claim 9, wherein said monocotyledonous plant cell is a corn cell.

11. The method of claim 8, wherein said plant cell is dicotyledonous plant cell.

30
12. The method of claim 11, wherein said dicotyledonous cell is a soybean cell.

13. The method of claim 1, wherein said aerosol droplets which impact said cell comprise aerosol droplets which are less than 0.1 micron in diameter.
14. The method of claim 1, wherein said aerosol droplets are continuously targeted toward
5 said cell.
15. The method of claim 1, further comprising the placement of said cell on a target surface the linear and rotational movement of which can be separately controlled.
- 10 16. The method of claim 4, wherein said nucleotide sequences comprise a vector.
17. The method of claim 16, wherein said vector is selected from the group consisting of pBARGUS, pRBTBAR, pBARGFP, pSB12BARAHAS, pNPTAHAS, and combinations thereof.
- 15 18. The method of claim 1, wherein said aerosol droplets are produced by a micro-flow nebulizer.
19. The method of claim 8, wherein said molecules comprise nucleotide sequences, and said method further comprises transforming said plant cell with said nucleotide sequences and
20 regenerating a transgenic plant from said transformed plant cell.
20. The method of claim 19, further comprising obtaining progeny of said transgenic plant, wherein said progeny comprises said nucleotide sequence.
- 25 21. The transgenic plant produced by the method of claim 19, wherein said transgenic plant is a monocot.
22. The transgenic monocot plant of claim 21, wherein said monocot is a corn plant.
- 30 23. The transgenic plant produced by the method of claim 19, wherein said transgenic plant is a dicot.
24. The transgenic dicot plant of claim 23, wherein said dicot is a soybean plant.

25. The progeny of the transgenic plant of claim 21.
26. The progeny of the transgenic plant of claim 22.
- 5 27. The progeny of the transgenic plant of claim 23.
28. The progeny of the transgenic plant of claim 24.
29. Cells obtained from the progeny of claim 20.
- 10 30. A method of enhancing embryogenic callus production from embryos of elite soybean lines which comprises culturing said embryos on a medium comprising phytic acid, wherein the concentration of said phytic acid is between about 1 gm/l to less than 3000 mg/l.
- 15 31. A method of enhancing embryogenic callus production from embryos of elite soybean lines which comprises culturing said embryos on a medium comprising coconut water, wherein the concentration of said coconut water is between about 3% and about 6% by volume of said medium.
- 20 32. The method of claim 31, wherein said medium further comprises myoinositol and wherein the concentration of said myoinositol is about 1g/l to about 10g/l.
33. The method of claim 32, wherein said medium further comprises inorganic phosphorous.
- 25 34. The method of claim 33, wherein said inorganic phosphorous is in the form of KH_2PO_4 and wherein the concentration of said KH_2PO_4 is between about 500 mg/l and about 1000 mg/l.
35. The method of claim 32, wherein said medium further comprises phytic acid and wherein
30 the concentration of said phytic acid is about 1mg/l to less than about 3000 mg/l.
36. The method of claim 33, wherein said medium further comprises phytic acid and wherein the concentration of said phytic acid is about 1mg/l to less than about 3000mg/l.

37. The method of claim 12, further comprising culturing said soybean cell prior to impact using the method of claim 30.
38. The method of claim 12, further comprising culturing said soybean cell prior to impact
5 using the method of claim 31.
39. The method of claim 12, further comprising culturing said soybean cell prior to impact using the method of claim 32.
- 10 40. The method of claim 12, further comprising culturing said soybean cell prior to impact using the method of claim 33.
41. The method of claim 12, further comprising culturing said soybean cell prior to impact using the method of claim 35.
- 15 42. The method of claim 12, further comprising culturing said soybean cell prior to impact using the method of claim 36.
43. The method of claim 12, further comprising exposing the soybean cell to about 1 gm/l
20 phytic acid for about 3 to about 10 days before impacting said soybean cell.
44. An aerosol beam apparatus, comprising:
a vacuum chamber having a nozzle and adapted to contain a target to be impacted;
an entrainment housing having an interior communicating with said vacuum chamber;
25 a pressurized gas supply;
a nebulizer located within said entrainment housing and having a nebulizer orifice;
an sample material supply conduit communicating with said nebulizer and an sample
material supply for supplying sample material;
a nebulizer conduit communicating with said pressurized gas source and said nebulizer;
30 and
an entrainment tube communicating with said pressurized gas source and said interior of
said entrainment housing;

wherein a pressurized gas from said pressurized gas supply travels through said nebulizer conduit to said nebulizer and said sample material is carried by said pressurized gas through said nebulizer orifice, whereupon said pressurized gas and said sample material travel through said interior of said entrainment housing and enter said vacuum chamber through a nozzle and impact
5 said target while said pressurized gas also travels through said interior of said entrainment tube to said entrainment housing and a resulting pressurized entrainment gas flows in a guiding manner through said entrainment housing substantially parallel to and around said pressurized gas and said sample material.

10 45. The aerosol beam apparatus of claim 44, wherein said vacuum chamber is evacuated to a partial vacuum of about 26 to about 30 inches of Mercury.

46. The aerosol beam apparatus of claim 44, wherein said vacuum chamber further includes a movable stage for supporting said target.

15

47. The aerosol beam apparatus of claim 44, wherein said pressurized gas supply is a pressurized helium supply.

20 48. The aerosol beam apparatus of claim 44, wherein said pressurized gas supply further includes a filter.

49. The aerosol beam apparatus of claim 44, wherein said pressurized gas supply further includes at least one pressure regulator.

25 50. The aerosol beam apparatus of claim 44, wherein said pressurized gas supply further includes a pressure regulator before said nebulizer conduit and a pressure regulator before said entrainment tube.

30 51. The aerosol beam apparatus of claim 44, wherein said entrainment housing further includes a nucleospot.

52. The aerosol beam apparatus of claim 44, wherein said entrainment housing further includes a temperature controller for controlling a gas temperature in said entrainment housing.

53. The aerosol beam apparatus of claim 44, wherein said entrainment housing further includes a temperature controller that maintains a gas temperature in said entrainment housing in a range of about 32 degrees to about 80 degrees Centigrade.
- 5 54. The aerosol beam apparatus of claim 44, wherein said nozzle has an orifice with a diameter of about 200 microns to about 500 microns.

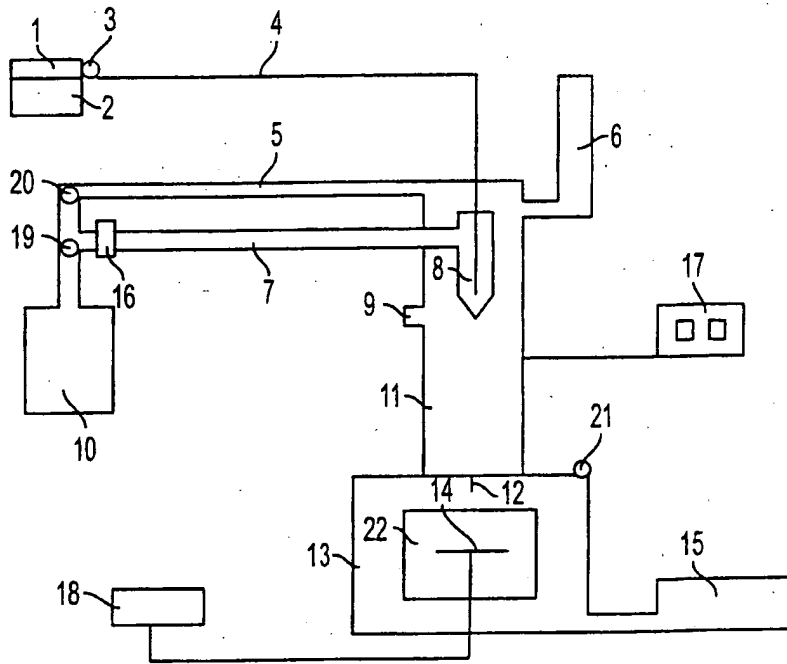


FIGURE 1